



HARVESTING/PROCESSING HEADS



# 600 SERIES





**It's no coincidence that Waratah has been an industry-leader for over 40 years. Because we've always listened to you to design durable, more productive and efficient harvesting and processing heads proven for your application.**

At our facilities in Finland and New Zealand, each head is made to order, so you get exactly what you need. Our heads are built to work with advanced technology providing precise control with accurate diameter and length measuring. With on-site facility testing, each product is proven on our time to be profitable on yours.

Our commitment to your success goes beyond product quality. When you put our heads to work, our global support network goes to work for you – from helping you choose the right head, to installation and startup, to being on site when you need us.

We offer the widest range of harvester/processor heads on the market. So whether you're harvesting at the stump, processing at the landing or somewhere in between, Waratah is built to work for you all over the world.



**"I think Waratahs are the toughest out there. We put a lot of demand on them."**

**Ben Reed, Wayne Stone Logging**







# 600 SERIES

Continuous 360-degree rotation  
with clean through-nose and  
from-the-side hose configurations

Proven in hardwood and softwood applications,  
Waratah 600-Series harvesters balance toughness with precision.

Advanced on-board  
controller and diagnostics

Heavy-duty  
steel frames

Laser find-end  
log alignment

Hardened alloy long-lasting steel  
pins with split nut pin retention

Single or twin lower  
delimb options

Powerful feed motors appropriately  
sized for best feeding performance

High-torque main saw motors with  
auto-chain tension for long service life and  
available in .404 or 3/4" pitch configurations

Rugged saw box designed for  
multiple logs, butt flare and low  
stump heights when harvesting

Three- or four-wheel synchronized  
drive configurations with log shuffling in  
four-wheel drive multi-stem applications





High load-bearing hanging bracket and rotator

High performance and efficient valves

Easy to service and well-protected hydraulics

Accurate length measuring in single- or multi-stem applications with many optional wheel styles

Standard top saws in .404 or 3/4" pitch

Optional floating or fixed heavy-duty front knives

Advanced delimb geometry for fast picking and stem catching

Heavy-duty cast and fabricated delimb arms with wear-resistant replaceable knife inserts

Proportional soft clamping for delimb and drive arms for less friction and fuel burn

Feed wheel options to suit any application





# HTH616C

Whether you're harvesting, processing or debarking, the versatile HTH616C is quick to handle the task. Although its size is compact, it boasts a large cutting capacity.

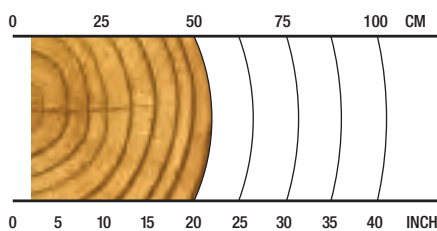
## OVERVIEW

Harvesting in early-to-late thinnings; productive processing or debarking.

## APPLICATIONS

- Hardwood harvesting/processing
- Softwood harvesting/processing
- Debarking
- Multi-tree processing
- Multi-tree harvesting
- Early thinnings
- Late or final thinnings/clear felling

## RECOMMENDED RANGE



**5-51 cm / 2-20 in.**

## SPECS



**1800 kg / 3,968 lb.**  
Net Weight



**35 MPa / 5,076 psi**  
Hydraulic Requirements



**510 mm / 20 in.**  
Max Delimb Opening



**680 mm / 26.7 in.**  
Max Feed Roller Opening



**550 mm / 21.7 in.**  
Maximum Sawing Capacity



**18-24 metric ton**  
Carrier Size





# HTH618C

When it comes to superior delimiting quality, the agile HTH618C is perfectly equipped. Its twin lower delimb arms balance productivity with control.

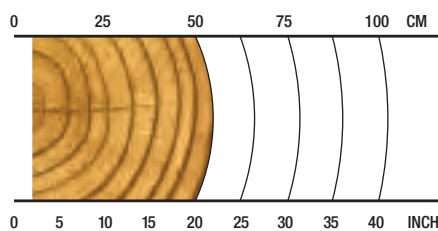
## OVERVIEW

Harvesting in early-to-late thinnings; productive processing or debarking.

## APPLICATIONS

- Hardwood harvesting/processing
- Softwood harvesting/processing
- Debarking
- Multi-tree harvesting
- Early thinnings
- Late or final thinnings/clear felling

## RECOMMENDED RANGE



**5-51 cm / 2-20 in.**

## SPECS



**2000 kg / 4409 lb.**  
Net Weight



**35 MPa / 5,076 psi**  
Hydraulic Requirements



**510 mm / 20 in.**  
Max Delimb Opening



**680 mm / 26.7 in.**  
Max Feed Roller Opening



**550 mm / 21.7 in.**  
Maximum Sawing Capacity



**20-25 metric ton**  
Carrier Size





# HTH622B

Versatility is maximized with the heavy-duty HTH622B. Equipped with exceptional drive power, this popular three-roller model is the ideal size for a variety of applications and can handle the toughest conditions.

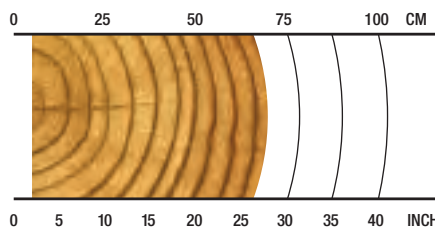
## OVERVIEW

Harvesting in late thinnings or final harvesting of large timber (head-appropriate), hardwood or softwood; some debarking.

## APPLICATIONS







Hardwood harvesting/processing  
 Softwood harvesting/processing  
 Debarking  
 Multi-tree harvesting  
 Early thinnings  
 Late or final thinnings/clear felling

## RECOMMENDED RANGE



**5-66 cm / 2-26 in.**

## SPECS

-  **2300 kg / 5,070 lb.**  
Net Weight
-  **32 MPa / 4,641 psi**  
Hydraulic Requirements
-  **675 mm / 26.6 in.**  
Max Delimb Opening
-  **720 mm / 28.3 in.**  
Max Feed Roller Opening
-  **750 mm / 29.5 in.**  
Maximum Sawing Capacity
-  **24-30 metric ton**  
Carrier Size





# HTH622C 4x4

The HTH622C 4X4 takes productivity and efficiency to a higher level with capabilities including multi-tree processing and independent log shuffling – minimizing waste and maximizing your profits.

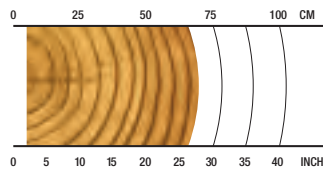
## OVERVIEW

Processing of large diameter timber from log deck; harvesting in late thinnings; final felling of large timber (head appropriate).

## APPLICATIONS

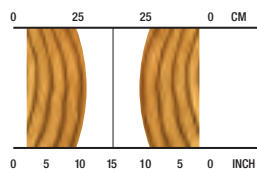
Hardwood harvesting/processing  
Softwood harvesting/processing  
Shovel logging  
Late or final thinnings/clear felling  
Multi-tree processing

## SINGLE STEM RECOMMENDED RANGE



**5-66 cm / 2-26 in.**

## MULTI-STEM RECOMMENDED RANGE (2 LOGS)



**5-28 cm / 2-11 in.**

## SPECS



**2740 kg / 6,040 lb.**  
Net Weight



**35 MPa / 5,076 psi**  
Hydraulic Requirements



**675 mm / 26.6 in.**  
Max Delimb Opening



**780 mm / 31 in.**  
Max Feed Roller Opening



**700 mm / 27.6 in.**  
Maximum Sawing Capacity



**25-35 metric ton**  
Carrier Size





# HTH623C

Productivity abounds with this over-achiever. The perfect match to a 25-ton carrier, the HTH623C provides exceptional power to weight in its proven durable design – achieving supreme feeding speeds, log control and agility – making short work of the toughest applications.

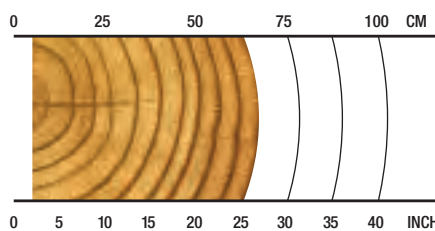
## OVERVIEW

Harvesting in late thinnings; final felling of large timber (head-appropriate), hardwood or softwood; some debarking.

## APPLICATIONS

Hardwood harvesting/processing  
Softwood harvesting/processing  
Debarking  
Shovel logging  
Late or final thinnings/clear felling

## RECOMMENDED RANGE



**5-69 cm / 2-27 in.**

## SPECS



**3050 kg / 6,724 lb.**  
Net Weight



**35 MPa / 5,076 psi**  
Hydraulic Requirements



**700 mm / 27.5 in.**  
Max Delimb Opening



**900 mm / 35.4 in.**  
Max Feed Roller Opening



**750 mm / 29.5 in.**  
Maximum Sawing Capacity



**25-34 metric ton**  
Carrier Size





# HTH623C 4x4

Perfectly suited for 27+ metric-ton machines, this four-wheel drive, four-roller head is equally comfortable single stemming large logs or multi-stemming on-demand. Known for exceptional agility and log handling for its size, a large cutting capacity and outstanding traction, the HTH623C 4x4 boosts productivity in demanding applications.

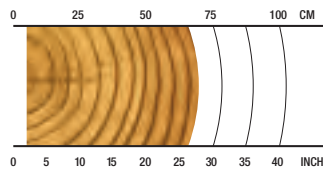
## OVERVIEW

Harvesting in late thinnings; final felling of large timber (head-appropriate), hardwood or softwood.

## APPLICATIONS

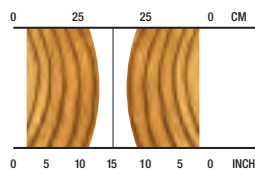
Hardwood harvesting/processing  
Softwood harvesting/processing  
Shovel logging  
Late or final thinnings/clear felling

## SINGLE STEM RECOMMENDED RANGE



**5-71 cm / 2-28 in.**

## MULTI-STEM RECOMMENDED RANGE (2 LOGS)



**5-33 cm / 2-13 in.**

## SPECS



**3350 kg / 7,385 lb.**  
Net Weight



**35 MPa / 5,076 psi**  
Hydraulic Requirements



**710 mm / 28 in.**  
Max Delimb Opening



**875 mm / 34.4 in.**  
Max Feed Roller Opening



**825 mm / 32.5 in.**  
Maximum Sawing Capacity



**27+ metric ton**  
Carrier Size





# HTH624C

Work confidently with the rugged and reliable HTH624C. Equipped with a premium valve, this highly productive processor cuts through any challenges – including big timber.

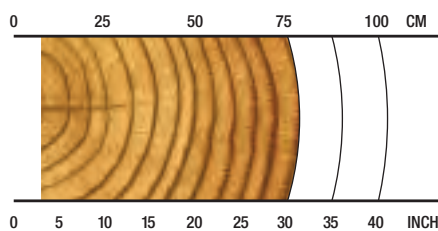
## OVERVIEW

Harvesting in late thinnings; final felling of large timber (head-appropriate), hardwood or softwood.

## APPLICATIONS

Hardwood harvesting/processing  
Softwood harvesting/processing  
Shovel logging  
Late or final thinnings/clear felling

## RECOMMENDED RANGE



**8-76 cm / 3-30 in.**

## SPECS



**3450 kg / 7,606 lb.**  
Net Weight



**35 MPa / 5,076 psi**  
Hydraulic Requirements



**760 mm / 30 in.**  
Max Delimb Opening



**850 mm / 33.5 in.**  
Max Feed Roller Opening



**810 mm / 32 in.**  
Maximum Sawing Capacity



**30+ metric ton**  
Carrier Size





# HTH625C

The aggressive HTH625C optimizes productivity with impressive log control. This high-performer flies through timber with great log handling with twin lower delimb arms.

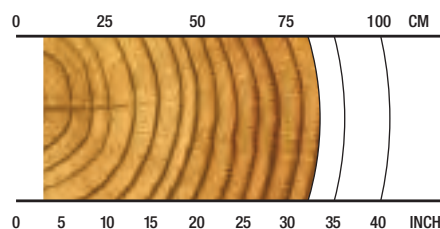
## OVERVIEW

Harvesting in late thinnings; final felling of large timber (head-appropriate), hardwood or softwood.

## APPLICATIONS

Hardwood harvesting/processing  
Softwood harvesting/processing  
Shovel logging  
Late or final thinnings/clear felling

## RECOMMENDED RANGE



**8-81 cm / 3-32 in.**

## SPECS



**4250 kg / 9,370 lb.**  
Net Weight



**35 MPa / 5,076 psi**  
Hydraulic Requirements



**800 mm / 31.5 in.**  
Max Delimb Opening



**850 mm / 33.5 in.**  
Max Feed Roller Opening



**900 mm / 35.4 in.**  
Maximum Sawing Capacity



**30+ metric ton**  
Carrier Size





# HTH626

Large timber is no match for the tough HTH626, specifically designed to dominate large-diameter wood for felling, delimiting and processing.

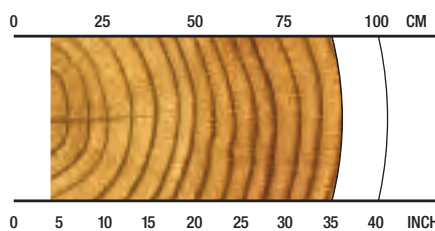
## OVERVIEW

Final felling or harvesting of large timber; optimum delimiting force.

## APPLICATIONS

Softwood harvesting/processing  
Shovel logging  
Late or final thinnings/clear felling

## RECOMMENDED RANGE



**10-88 cm / 4-35 in.**

## SPECS



**4750 kg / 10,471 lb.**  
Net Weight



**35 MPa / 5,076 psi**  
Hydraulic Requirements



**880 mm / 34.6 in**  
Max Delimb Opening



**980 mm / 38.6 in.**  
Max Feed Roller Opening



**860 mm / 34 in.**  
Maximum Sawing Capacity



**35+ metric ton**  
Carrier Size





# FL85 SERIES-II

Whether you're tethered on steep slope, or just looking for a heavy-duty mid-range felling head, the versatile FL85 Series -II has just the right weight for stability on steep ground, a large cutting capacity and grapple — this durable, multi-use head provides a productivity boost in any felling application.

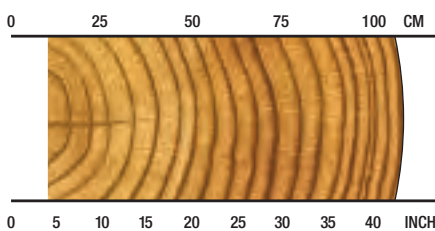
## OVERVIEW

Thinnings, steep slope, shovel logging, topping, storm damage, clean-up.

## APPLICATIONS

Shovel logging  
 Early thinnings  
 Late or final thinnings/clear felling  
 Topping  
 Storm damage  
 Steep slope

## RECOMMENDED RANGE



**10-110 cm / 4-43 in.**

## SPECS



**1747 kg / 3,851 lb.**  
 Net Weight



**25 MPa / 3,625 psi**  
 Hydraulic Requirements



**1100 mm / 43.3 in.**  
 Max Grapple Opening



**925 mm / 36 in.**  
 Maximum Sawing Capacity



**20-27 metric ton**  
 Carrier Size





# FL95



Steep slope-specific tilt design allows felling on 65 degrees without hitting stops.



Optional retractable saw box utilizing full grapple capabilities when shovel logging.



Saw box positioned in felling mode. Provides maximum cutting capacity.

Purpose-built for steep slope applications, the FL95 seamlessly boosts productivity with an optional retractable saw box that is just where you need it when felling, or out of the way when shovel logging. Plus with its broad downslope working envelope, large cutting and extra-large grapple capacities, you'll minimize effort and maximize efficiency.

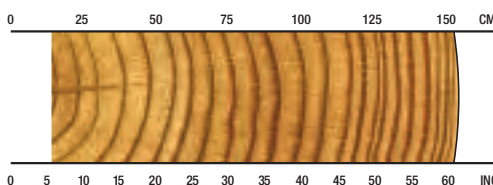
## OVERVIEW

Thinnings, steep slope, shovel logging, topping, storm damage, clean-up.

## APPLICATIONS

Shovel logging  
Late or final thinnings/clear felling  
Topping  
Storm damage  
Steep slope

## RECOMMENDED RANGE



**14-158\* cm / 5.5-62.2\* in.**

\*with optional retractable saw box

## SPECS



**2620 kg / 5,776 lb.\*\***  
Net Weight



**35 MPa / 5,076 psi**  
Hydraulic Requirements



**1580 mm / 62 in.**  
Max Grapple Opening



**1000 mm / 39 in.**  
Maximum Sawing Capacity



**30+ metric ton**  
Carrier Size

\*\* Weight is 2480 kg / 5,467 lb. with Fixed Saw



# MEASURING AND CONTROL SYSTEMS

We focus on providing you with accurate diameter and length measuring systems for profitable precision. Simplify operations and boost productivity with real-time statistics and measuring information, and wireless data transfer.



## TIMBERRITE 30L

### KEY FEATURES

- PC-based system integrates control of the harvester/processor head with the measure and bucking of timber.
- Memory for an unlimited number of sites; personal settings for up to six operators.
- Optimizes using length plus large-end (LED) or small-end (SED) diameter logic, incorporating eight species, 40 pre-selections per species.
- Individual species calibration and individual species soft clamping settings of delimb and drive arms.
- Monitor uptime, productivity and operating costs with work and repair statistics.
- Download production reports, worksite instructions, repair follow-ups, calibration history, log tables and more.
- Transfer data with our WaratahMate™ app, email or USB stick.
- Simplified diagnostic tests with built-in diagnostic troubleshooting of all inputs, outputs and sensors.

## TIMBERRITE 30H

### KEY FEATURES

- Full optimizing of each log, prioritizing by assigned price to maximize log value.
- Send and receive production information, machine settings and harvesting instructions via email regardless of your location.
- StanForD files ensure data interchange with other professional systems in the forestry business.
- Monitor uptime, productivity and operating costs with work and repair statistics.
- Download production reports, worksite instructions, repair follow-ups, calibration history, log tables and more.
- Transfer data with our WaratahMate™ app, email or USB stick.
- Simplified diagnostic tests with built-in diagnostic troubleshooting of all inputs, outputs and sensors.

### COMPONENTS

#### Display Module

26.4 cm / 10.4 in.: XGA (1024x768)  
Touch screen display, includes integrated controller with flash drive.  
Optional keyboard and touchpad mouse.

#### PC-based CPU Module

Includes email and optional GPS

#### Joystick Module

Interface for joystick communication

#### SureGrip or Danfoss Joysticks

For comfortable control of harvester head functions

#### CrossFire Module

CrossFire controls base machine pumps

#### Harvester Head Module (HHM)

Processes and conveys control signals to the harvester and measuring data from the harvester head

#### WaratahMate™ smartphone application, email or USB stick

Conveniently transfer files



# OPTIONS

Waratah heads are configurable to your application.  
Consult your dealer for option availability.



## Configurability

Waratah has a wide range of focused options for harvesting and processing applications including single- and multi-stem processing, multi-tree handling, and all models include options for softwood, crooked hardwood and debarking.



## Color Marking

Waratah offers nozzle-applied color marking systems to simplify log identification. Three colors provide many assortment combinations to either the small or large ends, improving sorting and yard safety.



## Main Saws, Saw Motors, Top Saws

The 600 series have high-cutting capacity main saws for extra productivity in large wood. Select models have .404 and 3/4" pitch chain options; all main saws include auto chain tensioning and are driven by durable and efficient high torque saw motors. The top saws increase productivity in any processing and crooked wood applications and are standard equipment on all 600 series models.



## Measuring Wheels

Application-specific measuring wheels are engineered for accurate and consistent measuring in all tree species with enhancements for log quality. Selections include wide and narrow models, coarse and fine teeth options, and multi-stem, debarking configurations.



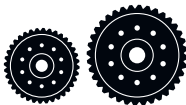
## Delimb Arms

Select models can be configured for more productivity and log quality enhancements with specific harvesting or processing upper delimb arms, and single or twin lower delimb options. All have durable, pre-formed hardened steel replaceable knife inserts.



## Rotators

Waratah offers a productive 360-degree continuous rotation on all of the 600 series models, with options of hoses through the rotate unit or from the side. It assures a cleaner look and more uptime. Also included are options of non-continuous 320-degree and Indexator brand options on select models.



## Feed Rollers

Many feed roller options are available for a variety of applications, offering improved traction and reducing fiber damage. Wheel options include eucalyptus debarking, bar, thumbnail, alpine, rubber, MenSe and non-aggressive styles.



## Multi-tree Handling

Select models have multi-tree handling (MTH) capabilities, providing superior accumulating and precise bundle feeding with the option. MTH ability increases productivity and can easily be installed between the rotator and hanging bracket – even on existing heads.



## Front Knives

Waratah offers heavy-duty floating or fixed front knife options with specialized profiles and cutting edges for superior delimiting in any application.

Talk to your Waratah dealer about more available options.





waratah

HTH622C



|  | HTH616C  | HTH618C                                  | HTH622B   |
|--|--|--|---|
| <b>DIMENSIONS</b>  |  |  |   |
| Width, head open (mm/in.)  | 1600 / 63  | 1600 / 63                                | 1700 / 67   |
| <b>WEIGHT</b>  |  |  |   |
| Excluding link and some options (kg/lb.)   | 1800 / 3,968   | 2000 / 4,409                             | 2300 / 5,070  |
| <b>ROTATION</b>  |  |  |   |
|  | 360 continuous or<br>320 degree  | 360 continuous or<br>320 degree          | 360 continuous or<br>320 degree   |
| <b>DELIMBING</b>   |  |  |   |
| Delimiting knives  | 1 fixed front, 2 moving*,<br>1 fixed rear<br>(*option for single lower delimb) | 1 fixed front, 4 moving,<br>1 fixed rear | 1 fixed/floating, 2 moving*,<br>1 fixed rear<br>(*option for single lower delimb) |
| Lower delimb (standard/option, (qty))  | option, 1  | standard, 2                              | option, 1   |
| Maximum delimb opening processing arms<br>or felling head grapple opening (mm/in.) | 510 / 20   | 510 / 20                                 | 675 / 26.6  |
| Maximum delimb opening CTL arms (mm/in.)   | 700 / 27.5   | 700 / 27.5                               |   |
| Maximum opening lower knives (mm/in.)  | 630 / 24.8   | 650 / 25.6                               | 640 / 25.2  |
| <b>DRIVE</b>   |  |  |   |
| Quantity drive rollers   | 3  | 3  | 3   |
| Motor cc - option 1 (drive, fixed)   | (500,315)  | (500,315)                                | (702,400)   |
| Maximum feed speed (m/s, ft/s)   | 6.5-8.0 / 21-26  | 6.5-8.0 / 21-26                          | 5.4 / 18  |
| Maximum roller opening (mm/in.)  | 680 / 26.7   | 680 / 26.7                               | 720 / 28.3  |
| Motor cc - option 2 (drive, fixed)   | (630,400)  | (630,400)                                |   |
| Minimum feed arm diameter (mm/in.)   | 50 / 2   | 50 / 2                                   | 50 / 2  |
| <b>TOP SAW</b>   |  |  |   |
| Maximum cut diameter (mm/in.)  | 320 / 12.5   | 320 / 12.5                               | 400 / 16  |
| Length of saw bar (mm/in.)   | 420 / 16.5   | 420 / 16.5                               | 640 / 25  |
| Chain type (in.)   | 0.404  | 0.404                                    | 0.404   |
| Top saw motor displacement   | 10 cc  | 10 cc                                    | 10 cc   |
| <b>BUTT / FELLING SAW</b>  |  |  |   |
| Standard Saw   | SC100  | Waratah AT 3/4"                          | SC100   |
| Maximum cut diameter (mm/in.)  | 550 / 21.7   | 550 / 21.7                               | 750 / 29.5  |
| Length of saw bar (mm/in.)   | 750 / 29.5   | 750 / 29.5                               | 900 / 35.4  |
| Chain type (in.)   | 0.404  | 3/4"                                     | 0.404   |
| Saw motor  | 3/4" - 45 cc & 404 -19 cc  | 3/4" - 45 cc                             | 3/4" - 45 cc  |
| Oil tank capacity (L/gal.)   | 10 / 2.6   | 10 / 2.6                                 | 12 / 3.2  |
| <b>CARRIER RANGE</b>   |  |  |   |
| Metric tons  | 18-24 metric tons  | 20-25 metric tons                        | 24-30 metric tons   |
| <b>HYDRAULIC SYSTEM</b>  |  |  |   |
| Maximum operating pressure (MPa/psi)   | 35 / 5,076   | 35 / 5,076                               | 32 / 4,641  |
| Maximum pump capacity (L/min., gal./min.)  | 320-360 / 85-95  | 320-360 / 85-95                          | 300-320 / 79-85   |
| <b>CONTROL AND MEASURING SYSTEM</b>  |  |  |   |
|  | <b>TimberRite, TR100</b>   | <b>TimberRite, TR100</b>                 | <b>TimberRite, TR100</b>  |
| <b>OPTIONAL EQUIPMENT</b>  |  |  |   |
| Optional Butt Saw  | Waratah AT 3/4"  | SC100                                    | Waratah AT 3/4"   |
| Maximum cut diameter (cm/in.)  | 55 / 22  | 55 / 22                                  | 81 / 32   |
| Length of saw bar (cm/in.)   | 74 / 29  | 75 / 29                                  | 80 / 31   |
| Optional Top Saw   |  |  |   |
| Maximum cut diameter (cm/in.)  |  |  |   |
| Length of saw bar (cm/in.)   |  |  |   |
| No top saw   | yes  | yes                                      | yes   |
| Continuous 360-degree rotation   | yes  | yes                                      | yes   |
| Color marking  | no   | no                                       | yes   |
| Multi-tree harvesting  | yes  | yes                                      | no  |
| Multi-tree processing  | yes  | yes                                      | no  |
| Fabricated processing upper delimb arms  | yes  | yes                                      | no  |
| Cast processing upper delimb arms  | yes  | yes                                      | yes   |
| Harvesting (CTL) upper delimb arms   | yes  | yes                                      | no  |
| MenSe feed rollers   | yes  | yes                                      | yes   |
| Debarking feed rollers   | yes  | yes                                      | yes   |
| Steel thumbnail feed rollers   | yes  | yes                                      | yes   |
| Alpine   | yes  | yes                                      | yes   |
| Non-aggressive fixed roller  | no   | no                                       | yes   |
| Steel ribbed feed rollers  | no   | no                                       | yes   |



This brochure has been compiled with care for worldwide circulation. While general information, pictures and descriptions are provided, some illustrations and text may include options and accessories not available in all regions. Please contact your local dealer for details. Waratah reserves the right to change specifications and design for products described in this brochure without notice. No liability for errors and omissions.

|  | HTH622C 4x4                                 | HTH623C   | HTH623C 4x4   |
|--|---|---|---|
| <b>DIMENSIONS</b>  |   |   |   |
| Width, head open (mm/in.)  | 1820 / 72                                   | 2000 / 79   | 2000 / 79   |
| <b>WEIGHT</b>  |   |   |   |
| Excluding link and some options (kg/lb.)   | 2740 / 6,040                                | 3050 / 6,724  | 3530 / 7,782  |
| <b>ROTATION</b>  |   |   |   |
|  | 360 continuous or<br>320 degree             | 360 continuous or<br>320 degree   | 360 continuous  |
| <b>DELIMBING</b>   |   |   |   |
| Delimiting knives  | 1 fixed/floating, 2 moving,<br>1 fixed rear | 1 fixed/floating, 2 moving*,<br>1 fixed rear<br>(*option for single lower delimb) | 1 fixed/floating, 2 moving*,<br>1 fixed rear<br>(*option for single lower delimb) |
| Lower delimb (standard/option, (qty))  |   | option, 1   | option, 1   |
| Maximum delimb opening processing arms<br>or felling head grapple opening (mm/in.) | 675 / 26.6                                  | 700 / 27.5  | 710 / 28  |
| Maximum delimb opening CTL arms (mm/in.)   |   |   |   |
| Maximum opening lower knives (mm/in.)  |   | 850 / 33.5  | 865 / 34  |
| <b>DRIVE</b>   |   |   |   |
| Quantity drive rollers   | 4   | 3   | 4   |
| Motor cc - option 1 (drive, fixed)   | (702,400)                                   | (837,500)   | (1048,630)  |
| Maximum feed speed (m/s, ft/s)   | 6.5 / 21                                    | 4.7-5.2 / 15.4-17   |   |
| Maximum roller opening (mm/in.)  | 780 / 31                                    | 900 / 35.4  | 875 / 34.4  |
| Motor cc - option 2 (drive, fixed)   |   | (1048,630)  |   |
| Minimum feed arm diameter (mm/in.)   | 50 / 2                                      | 60 / 2.4  | 60 / 2.4  |
| <b>TOP SAW</b>   |   |   |   |
| Maximum cut diameter (mm/in.)  | 400 / 16                                    | 450 / 18  | 572 / 22  |
| Length of saw bar (mm/in.)   | 640 / 25                                    | 590 / 23  | 530 / 21  |
| Chain type (in.)   | 0.404                                       | 0.404   | 0.404   |
| Top saw motor displacement   | 10 cc                                       | 19 cc   | 20 cc   |
| <b>BUTT / FELLING SAW</b>  |   |   |   |
| Standard Saw   | Waratah AT 3/4                              | Waratah AT 3/4  | Waratah AT 3/4  |
| Maximum cut diameter (mm/in.)  | 700 / 27.6                                  | 750 / 29.5  | 825 / 32.5  |
| Length of saw bar (mm/in.)   | 900 / 35.4                                  | 900 / 35.4  | 1020 / 40   |
| Chain type (in.)   | 3/4"  | 0.404   | 3/4"  |
| Saw motor  | 50 cc                                       | 3/4" - 45 cc  | 50 cc   |
| Oil tank capacity (L/gal.)   | 16 / 4.2                                    | 16 / 4.2  | 16 / 4.2  |
| <b>CARRIER RANGE</b>   |   |   |   |
| Metric tons  | 25-35 metric tons                           | 25-34 metric tons   | 27+ metric tons   |
| <b>HYDRAULIC SYSTEM</b>  |   |   |   |
| Maximum operating pressure (MPa/psi)   | 35 / 5,076                                  | 35 / 5,076  | 35 / 5,076  |
| Maximum pump capacity (L/min., gal./min.)  | 320-360 / 85-95                             | 320-360 / 85-95   | 320-360 / 85-95   |
| <b>CONTROL AND MEASURING SYSTEM</b>  |   |   |   |
|  | <b>TimberRite, TR100</b>                    | <b>TimberRite, TR100</b>  | <b>TimberRite</b>   |
| <b>OPTIONAL EQUIPMENT</b>  |   |   |   |
| Optional Butt Saw  | SC100                                       | SC100   |   |
| Maximum cut diameter (cm/in.)  | 75 / 29.5                                   | 75 / 29.5   |   |
| Length of saw bar (cm/in.)   | 90 / 35.4                                   | 90 / 35   |   |
| Optional Top Saw   |   |   | Waratah 3/4"  |
| Maximum cut diameter (cm/in.)  |   |   | 57.2 / 22   |
| Length of saw bar (cm/in.)   |   |   | 73.6 / 29   |
| No top saw   | no  | no  | no  |
| Continuous 360-degree rotation   | yes   | yes   | yes   |
| Color marking  | yes   | yes   | yes   |
| Multi-tree harvesting  | no  | no  | no  |
| Multi-tree processing  | yes   | no  | yes   |
| Fabricated processing upper delimb arms  | yes   | yes   | yes   |
| Cast processing upper delimb arms  | yes   | yes   | yes   |
| Harvesting (CTL) upper delimb arms   | no  | no  | no  |
| MenSe feed rollers   | yes   | yes   | no  |
| Debarking feed rollers   | yes   | yes   | no  |
| Steel thumbnail feed rollers   | yes   | yes   | yes   |
| Alpine   | yes   | yes   | yes   |
| Non-aggressive fixed roller  | no  | yes   | yes   |
| Steel ribbed feed rollers  | no  | no  | no  |



|  | HTH624C                               | HTH625C                         | HTH626                          |
|--|---------------------------------------|---------------------------------|---------------------------------|
| <b>DIMENSIONS</b>  |                                       |                                 |                                 |
| Width, head open (mm/in.)  | 2000 / 79                             | 2000 / 79                       | 2200 / 87                       |
| <b>WEIGHT</b>  |                                       |                                 |                                 |
| Excluding link and some options (kg/lb.)   | 3450 / 7,606                          | 4250 / 9,370                    | 4750 / 10,471                   |
| <b>ROTATION</b>  |                                       |                                 |                                 |
|  | 360 continuous or<br>320 degree       | 360 continuous or<br>320 degree | 360 continuous or<br>320 degree |
| <b>DELIMBING</b>   |                                       |                                 |                                 |
| Delimiting knives  | 1 floating, 2 moving,<br>1 fixed rear | 1 floating, 4 moving            | 1 floating, 2 moving            |
| Lower delimb (standard/option, (qty))  |                                       | standard, 2                     |                                 |
| Maximum delimb opening processing arms<br>or felling head grapple opening (mm/in.) | 760 / 30                              | 800 / 31.5                      | 880 / 34.6                      |
| Maximum delimb opening CTL arms (mm/in.)   | 700 / 27.5                            | 700 / 27.5                      |                                 |
| Maximum opening lower knives (mm/in.)  |                                       | 890 / 35                        |                                 |
| <b>DRIVE</b>   |                                       |                                 |                                 |
| Quantity drive rollers   | 3                                     | 3                               | 3                               |
| Motor cc - option 1 (drive, fixed)   | (1048,630)                            | (1395,800)                      | (1395,800)                      |
| Maximum feed speed (m/s, ft/s)   | 4.7 / 15.4                            | 4 / 13                          | 4 / 13                          |
| Maximum roller opening (mm/in.)  | 850 / 33.5                            | 850 / 33.5                      | 980 / 38.6                      |
| Motor cc - option 2 (drive, fixed)   |                                       |                                 |                                 |
| Minimum feed arm diameter (mm/in.)   | 80 / 3                                | 80 / 3                          | 100 / 4                         |
| <b>TOP SAW</b>   |                                       |                                 |                                 |
| Maximum cut diameter (mm/in.)  | 500 / 20                              | 500 / 20                        | 400 / 16                        |
| Length of saw bar (mm/in.)   | 750 / 29.5                            | 740 / 29                        | 590 / 23                        |
| Chain type (in.)   | 0.404                                 | 3/4"                            | 0.404                           |
| Top saw motor displacement   | 20 cc                                 | 20 cc                           | 19 cc                           |
| <b>BUTT / FELLING SAW</b>  |                                       |                                 |                                 |
| Standard Saw   | Waratah AT 3/4                        | Waratah AT 3/4                  | Waratah AT 3/4                  |
| Maximum cut diameter (mm/in.)  | 810 / 32                              | 900 / 35.4                      | 860 / 34                        |
| Length of saw bar (mm/in.)   | 965 / 38                              | 1020 / 40                       | 960 / 38                        |
| Chain type (in.)   | 3/4"                                  | 3/4"                            | 3/4"                            |
| Saw motor  | 50 cc                                 | 50 cc                           | 45 cc                           |
| Oil tank capacity (L/gal.)   | 16 / 4.2                              | 22 / 5.8                        | 25 / 6.6                        |
| <b>CARRIER RANGE</b>   |                                       |                                 |                                 |
| Metric tons  | 30+ metric tons                       | 30+ metric tons                 | 35+ metric tons                 |
| <b>HYDRAULIC SYSTEM</b>  |                                       |                                 |                                 |
| Maximum operating pressure (MPa/psi)   | 35 / 5,076                            | 35 / 5,076                      | 35 / 5,076                      |
| Maximum pump capacity (L/min., gal./min.)  | 320-360 / 85-95                       | 320-360 / 85-95                 | 320-360 / 85-95                 |
| <b>CONTROL AND MEASURING SYSTEM</b>  |                                       |                                 |                                 |
|  | TimberRite, TR100                     | TimberRite, TR100               | TimberRite, TR100               |
| <b>OPTIONAL EQUIPMENT</b>  |                                       |                                 |                                 |
| Optional Butt Saw  | SC100                                 |                                 |                                 |
| Maximum cut diameter (cm/in.)  | 75 / 29.5                             |                                 |                                 |
| Length of saw bar (cm/in.)   | 90 / 35                               |                                 |                                 |
| Optional Top Saw   | Waratah 3/4"                          | Waratah 3/4"                    |                                 |
| Maximum cut diameter (cm/in.)  | 50.8 / 20                             | 50.8 / 20                       |                                 |
| Length of saw bar (cm/in.)   | 73.6 / 29                             | 73.6 / 29                       |                                 |
| No top saw   | no                                    | no                              | yes                             |
| Continuous 360-degree rotation   | yes                                   | yes                             | yes                             |
| Color marking  | yes                                   | yes                             | yes                             |
| Multi-tree harvesting  | no                                    | no                              | no                              |
| Multi-tree processing  | no                                    | no                              | no                              |
| Fabricated processing upper delimb arms  | no                                    | yes                             | yes                             |
| Cast processing upper delimb arms  | yes                                   | no                              | no                              |
| Harvesting (CTL) upper delimb arms   | no                                    | no                              | no                              |
| MenSe feed rollers   | yes                                   | yes                             | yes                             |
| Debarking feed rollers   | no                                    | no                              | yes                             |
| Steel thumbnail feed rollers   | yes                                   | yes                             | no                              |
| Alpine   | yes                                   | yes                             | yes                             |
| Non-aggressive fixed roller  | no                                    | no                              | no                              |
| Steel ribbed feed rollers  | no                                    | no                              | no                              |

This brochure has been compiled with care for worldwide circulation. While general information, pictures and descriptions are provided, some illustrations and text may include options and accessories not available in all regions. Please contact your local dealer for details. Waratah reserves the right to change specifications and design for products described in this brochure without notice. No liability for errors and omissions.

|   | FL85 SERIES-II    | FL95            |
|---|-------------------|-----------------|
| <b>DIMENSIONS</b>   |                   |                 |
| Width, head open (mm/in.)   | 1822 / 71.7       | 2100 / 83       |
| <b>WEIGHT</b>   |                   |                 |
| Excluding link and some options (kg/lb.)  | 1747 / 3,851      | 2620 / 5,776    |
| <b>ROTATION</b>   |                   |                 |
|   | 360 continuous    | 360 continuous  |
| <b>DELIMBING</b>  |                   |                 |
| Delimiting knives   |                   |                 |
| Lower delimb (standard/option, (qty))   |                   |                 |
| Maximum delimb opening processing arms or felling head grapple opening (mm/in.) | 685 / 27          | 1580 / 62       |
| Maximum delimb opening CTL arms (mm/in.)  |                   |                 |
| Maximum opening lower knives (mm/in.)   |                   |                 |
| <b>DRIVE</b>  |                   |                 |
| Quantity drive rollers  |                   |                 |
| Motor cc - option 1 (drive, fixed)  |                   |                 |
| Maximum feed speed (m/s, ft/s)  |                   |                 |
| Maximum roller opening (mm/in.)   |                   |                 |
| Motor cc - option 2 (drive, fixed)  |                   |                 |
| Minimum feed arm diameter (mm/in.)  |                   |                 |
| <b>TOP SAW</b>  |                   |                 |
| Maximum cut diameter (mm/in.)   |                   |                 |
| Length of saw bar (mm/in.)  |                   |                 |
| Chain type (in.)  |                   |                 |
| Top saw motor displacement  |                   |                 |
| <b>BUTT / FELLING SAW</b>   |                   |                 |
| Standard Saw  | SuperCut 300      |                 |
| Maximum cut diameter (mm/in.)   | 925 / 36          | 1000 / 39       |
| Length of saw bar (mm/in.)  | 1130 / 44.5       | 1092 / 43       |
| Chain type (in.)  | 3/4"              | 3/4"            |
| Saw motor   |                   |                 |
| Oil tank capacity (L/gal.)  | 43 / 113          | 22 / 5.8        |
| <b>CARRIER RANGE</b>  |                   |                 |
| Metric tons   | 20-27 metric tons | 30+ metric tons |
| <b>HYDRAULIC SYSTEM</b>   |                   |                 |
| Maximum operating pressure (MPa/psi)  | 25 / 3,625        | 35 / 5,076      |
| Maximum pump capacity (L/min.,gal./min.)  | 220 / 58          | 200 / 53        |
| <b>CONTROL AND MEASURING SYSTEM</b>   |                   |                 |
| <b>OPTIONAL EQUIPMENT</b>   |                   |                 |
| Optional Butt Saw   |                   |                 |
| Maximum cut diameter (cm/in.)   |                   |                 |
| Length of saw bar (cm/in.)  |                   |                 |
| Optional Top Saw  |                   |                 |
| Maximum cut diameter (cm/in.)   |                   |                 |
| Length of saw bar (cm/in.)  |                   |                 |
| No top saw  |                   |                 |
| Continuous 360-degree rotation  |                   |                 |
| Color marking   |                   |                 |
| Multi-tree harvesting   |                   |                 |
| Multi-tree processing   |                   |                 |
| Fabricated processing upper delimb arms   |                   |                 |
| Cast processing upper delimb arms   |                   |                 |
| Harvesting (CTL) upper delimb arms  |                   |                 |
| MenSe feed rollers  |                   |                 |
| Debarking feed rollers  |                   |                 |
| Steel thumbnail feed rollers  |                   |                 |
| Alpine  |                   |                 |
| Non-aggressive fixed roller   |                   |                 |
| Steel ribbed feed rollers   |                   |                 |





FORESTRY EQUIPMENT

[www.Waratah.com](http://www.Waratah.com)