

**F-SERIES WHEEL LOADERS  
721F | 821F | 921F**

**CASE**  
CONSTRUCTION



**TIER 4  
FINAL**  
EU STAGE IV

**FASTER,  
FUEL EFFICIENT**

[www.casece.com](http://www.casece.com)  
**EXPERTS FOR THE REAL WORLD**  
**SINCE 1842**



# F-SERIES WHEEL LOADERS



## EXPERTS FOR THE REAL WORLD SINCE 1842

- 1842** Case is founded.
- 1869** The first Case portable steam engine - road construction is born!
- 1958** The first Case 4-WD wheel loader, the W9, is introduced.
- 1969** Case begins skid steer loader production.
- 1998** Ride control on loader backhoes and skid steer loaders: another Case first. From 1998 Case Wheel Loaders run FPT engines, leaders in industrial engine technology.
- 2001** The exclusive mid-mounted Cooling Cube in Case wheel loaders means clean engine, reliability and massive bucket payloads.



# HERITAGE

## A TRADITION OF INDUSTRY FIRSTS



**2011** *The first wheel loaders with SCR engine technology and Proshift transmission lead to faster cycles and fuel economy.*

**2012** *Case completes its Tier 4i (EU Stage IIIB) wheel loader range: once again, the first in the industry.*

**2015** *Case wheel loaders achieve Tier 4 Final / EU Stage IV emissions standards.*

# F-SERIES WHEEL LOADERS



## HIGH EFFICIENCY with no EGR or particulate filter

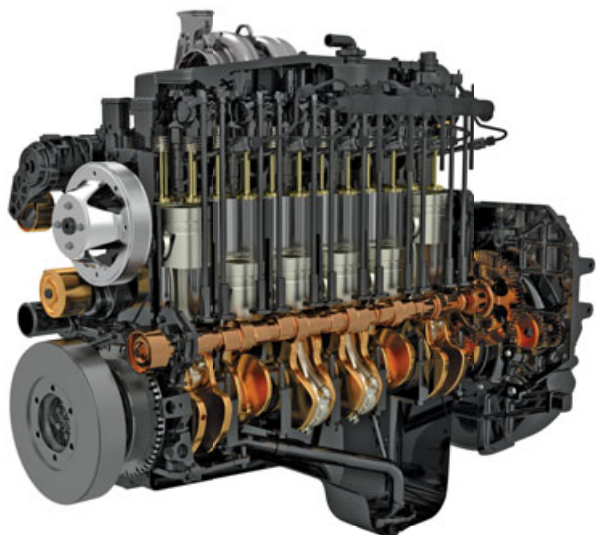
The engine was developed and manufactured by our award winning sister company FPT Industrial, which produces over 500,000 engines per year and powers world record winners.

The in-house design leverages advanced technologies developed for commercial vehicles and agriculture, and introduces specific tailored solutions for off-road applications.

The NEF N67, with 6 in-line cylinders and a 6.7 litre displacement, is designed to offer both fuel efficiency and reliability with plenty of power available.

- The air intake flow is increased by a turbocharger with air-to-air cooling.
- The multiple injection delivers best-in-class high torque performance at low rpms.
- No EGR valve is used: 100% fresh air is taken for combustion without DPF and no extra cooling system is needed.

Our engine technology is so reliable that it is trusted by the French Sea Rescue service for their boats:  
what better guarantee could you wish for?





# ENGINE KEEP IT SIMPLE



## LOW EMISSIONS without particulate filter

With HI-eSCR after-treatment, FPT technology meets EU Stage IV (Tier 4 final) emissions standards, a big step towards cleaner air. With this system, fewer components are involved, engine oil quality is not compromised and there is no need for a particulate filter (DPF) or

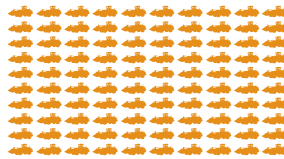
additional cooling. This allows for a very compact engine compartment, resulting in excellent rear visibility. In addition, the maximum temperature reached by HI-eSCR is 500°C, 200°C below the maximum temperature of a particulate filter.



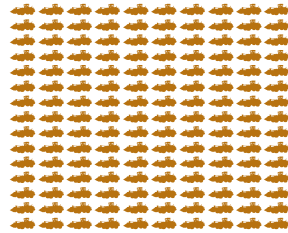
**HI-eSCR**



1996: EU Stage I  
US Tier 1



2011: EU Stage IIIB  
US Tier 4 interim

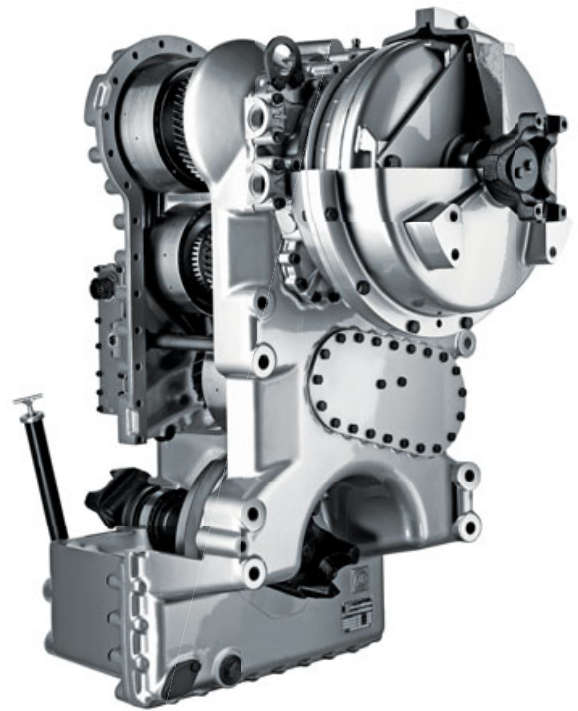
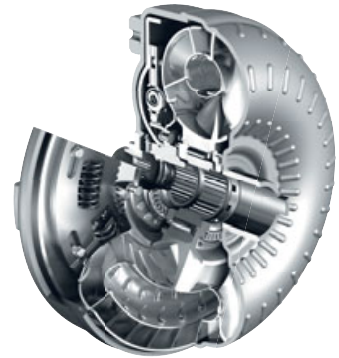


2015: EU Stage IV  
US Tier 4 final

It would take six months for a Tier 4 Final wheel loader with HI-eSCR technology to produce the particulate and NOx emissions that a Tier 1 wheel loader would produce in one day.



# F-SERIES WHEEL LOADERS



## HIGH EFFICIENCY

### ProShift transmission

ProShift transmission provides on average 1,5 litre/hour fuel saving and up to 20% faster cycle time.

This is the result of three premium features:

#### 1. 5-speed transmission

The 5 speeds allow to always work at lower rev's compared to 4-speed transmission. Lower rev's result in lower fuel usage.

When the ECO mode is selected not only the engine gives priority to fuel efficiency but also the transmission shifts at lower rev's in order to increase fuel efficiency and noise emission.

#### 2. Torque Converter Lock-up

Wheel loaders continuously shift gears and every time diesel saving is achieved with:

- Torque converter lock-up that kills viscous losses from 2nd up to 5th gear
- Engine de-rating during gear shifts that kills torque peaks in the clutch and contributes to lower fuel usage



# PROSHIFT TRANSMISSION GO FASTER, STAY EFFICIENT



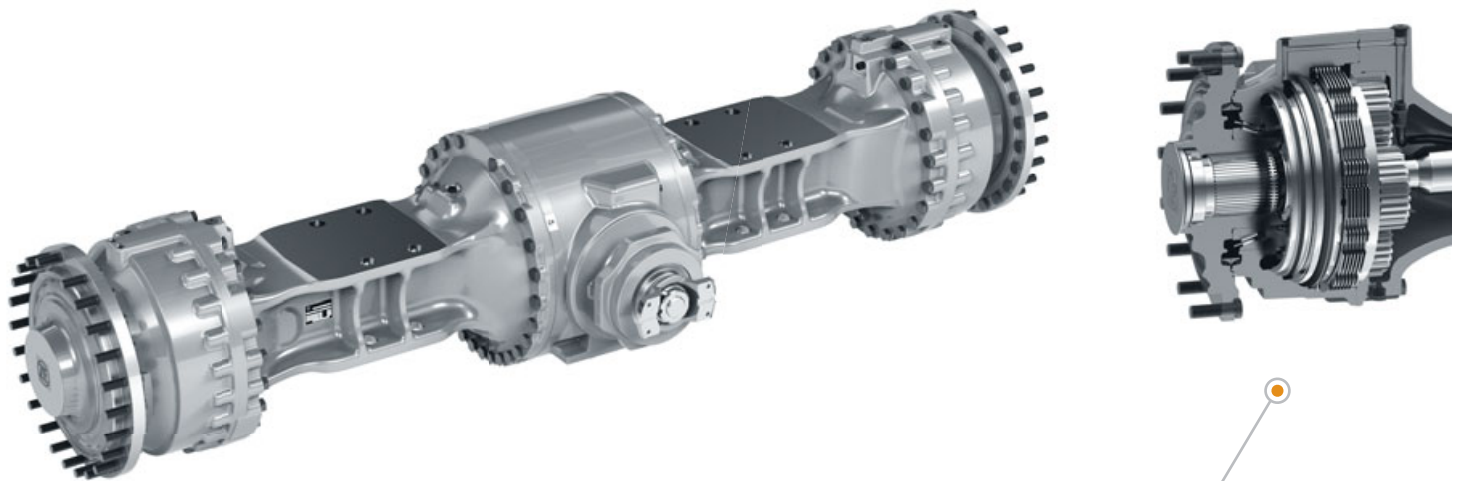
## EASY TO USE

Intelligent clutch cut off with power inch

3. Power inch

With Power Inch, positioning the loader is as smooth as with a hydrostatic transmission, with the added advantage of massive pushing power delivered by the torque converter. This also prevents rolling back on slopes.

# F-SERIES WHEEL LOADERS



- Multiple sintered bronze brake discs are cooled in an oil bath.
- Metal face seals are more resistant to water, fine debris and low temperatures.



## HIGH RELIABILITY

### Case heavy-duty axles

The heavy-duty axles are tougher, bigger and easier to service thanks to the 3-piece housing design. Wet multiple disc brakes, made of resistant sintered bronze, are located in each wheel hub. Our heavy-duty axles are engineered to support L5 or solid tyres for very abrasive environments. Solid tyres can be factory fitted.

A higher value results from:

- 20-30% lower tyre wear because of no slippage between the wheels;
- reduced fuel consumption because there is no friction in the differential
- reduced downtime for maintenance because of fewer moving components with open differentials.





# AXLES AND DIFFERENTIALS

## WHEN EFFICIENCY MEETS PRODUCTIVITY



### COST SAVINGS

#### 100% auto lock differential

With open differentials, no friction is applied to reduce wheel slip. As a result, there is less tyre wear and lower energy losses.

With the 100% Auto-lock, 100% of the available torque is transmitted to the wheels to provide maximum tractive effort.



Taking a curve on solid ground		Loading on soft ground	
<p><b>With limited slip differential:</b></p> <p>Automatic slip limited engagement</p> <ul style="list-style-type: none"> <li>- Internal losses and wind up</li> <li>- Increased tyre wear</li> </ul>	<p><b>With 100% diff lock (optional):</b></p> <p>No engagement (open diff)</p> <ul style="list-style-type: none"> <li>- No energy loss</li> <li>- Less tyre wear</li> </ul>	<p><b>With limited slip differential:</b></p> <ul style="list-style-type: none"> <li>- 70% tractive effort transmitted to the wheels</li> <li>- automatic engagement</li> </ul>	<p><b>With 100% diff lock (optional):</b></p> <ul style="list-style-type: none"> <li>- 100% tractive effort transmitted to the wheels</li> <li>- automatic or manual engagement</li> </ul>



# F-SERIES WHEEL LOADERS

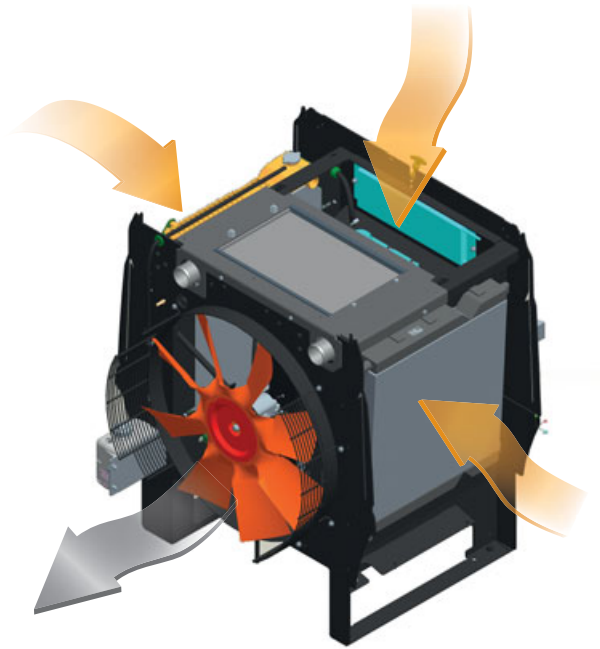


## HIGH RELIABILITY

### Case cooling cube

The unique design of the CASE cooling cube, with five radiators mounted to form a cube instead of overlapping, ensures a constant flow of fresh and clean air from the sides and from the top, to maintain constant fluid temperatures.

The cube structure provides easy access to radiators for a more effective cleaning and serviceability: additional cleaning can also be easily done manually, with separate access to each radiator.



## HIGH PAYLOAD

Better weight distribution with the rear mounted engine





# CASE COOLING CUBE THE ANTI-CLOGGING SOLUTION



## SUPERIOR COOLING EFFECTIVENESS

### Heavy-duty cooling

Handling fertilizer, cereals, animal feed or other materials indoors usually leads to radiator clogging. Case's solution is the Heavy-duty Cooling option, which features:

- Extra thin inlet grille that stops bigger particles
- Sealed radiator covers that ensure the cooling air is 100% filtered
- Wide core radiators increase self cleaning with the reversible fan and prevent clogging.

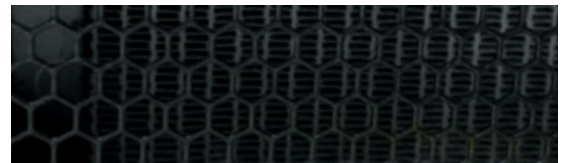
Available on 721F Waste Handler model and customisable on other models.



### HEAVY-DUTY GRILLE OUTSIDE



Heavy-Duty



Standard

### HEAVY-DUTY COOLERS INSIDE



Heavy-Duty



Standard

### Designed for dusty environment

The cooling system is mounted behind the cab, far from the rear bumper of the machine and from the ground: away from the dust.



# MAIN REASONS TO CHOOSE THE F-SERIES



## FAST CYCLES

ProShift transmission option reduces cycle times significantly thanks to the torque converter lock-up and the 5 speeds available.



## HIGH EFFICIENCY

Don't be surprised to see your fuel usage dramatically lower by, from 2 to 7 liters per hour, compared to other technologies.

With Hi-eSCR and the Proshift option you will avoid significant energy losses and costs.



## HIGH RELIABILITY

- Heavy-duty axles
- 100% differential lock
- Unique cooling package



## SAFE AND EASY MAINTENANCE

The rear mounted engine below the electric easy-to open hood is accessible at ground level. Grouped drains rationalise maintenance operations.





## COMFORTABLE AND SAFE CAB

- ROPS/FOPS level 2
- Pressurised cab
- Wider glazed area for unbeatable visibility
- Spacious cab



## SUPERIOR COOLING EFFICIENCY

- Five radiators form a cube instead of overlapping.
- Designed to maintain constant fluid temperatures.



## SAFE WITH FLAMMABLE MATERIALS

The exhaust's maximum temperature is 50% lower without DPF. AdBlue sprayed directly in the exhaust works as a sparks arrester while reducing NOx levels.



## LOW EMISSIONS

We keep it simple! Hi-eSCR, our EU Stage IV (Tier 4 final) compliant technology does not require an EGR valve or a particulate filter. You just need to add AdBlue once every 4 diesel refill.



# F-SERIES WHEEL LOADERS



## COMFORTABLE AND SAFE CAB

### Wider and well protected cab

- Our reinforced cab guarantees protection against roll over (ROPS) and falling objects (FOPS).
- Our cab is also certified P2 level according to European Standards EN143, which means that 94% of airborne particles are filtered. When working in particularly tough conditions, additional pressurisation and particle filtration can be fitted.
- On Waste Handler models windshield guards, provide protection from falling pieces of solid waste.
- The CASE Cab is 2.06 m<sup>3</sup> and 1.64 m wide: it is the widest cab in the industry
- The air suspended seat features a high back design and lumbar adjustment, a saving grace during long working days. It includes seat heaters which warm up cold winter mornings.



# CAB COMFORT RULES



## HIGH VISIBILITY

Wide glazed surfaces and curved engine hood

You'll feel more confident and work faster with the great all-round visibility provided by the very low shape of the curved rear hood and the ample glazed surfaces.



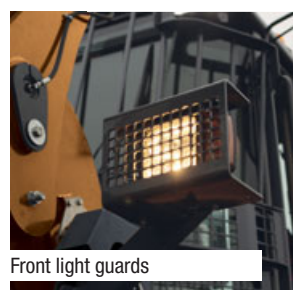
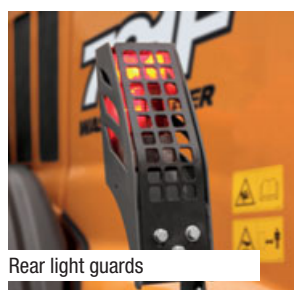
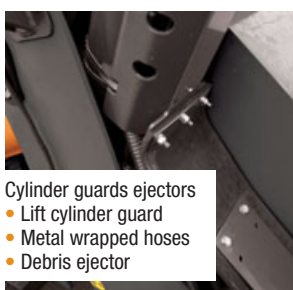
## COMFORTABLE AND SAFE CAB

Low engine vibrations

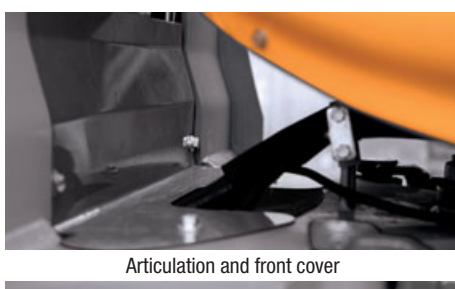
- The rear mounted engine is far from the cab, further enhancing operator comfort.
- Engine noise and vibrations are reduced by the 3-step injection: pre-, main- and post-injection.



# F-SERIES WHEEL LOADERS



Bottom guards (front and rear)





# 721F ADDITIONAL OPTIONS

## HEAVY DUTY PROTECTION



### HIGH RELIABILITY

#### A full range of protecting guards

To make your wheel loaders last longer in the toughest conditions, Case offers a full package of 16 guards that you can select depending on the mission of each of your machines (on request on other models). Less maintenance, more uptime.



### SAFE WITH FLAMMABLE MATERIALS

#### With Hi-eSCR system

Handling wood, green waste and other flammable materials can be dangerous, especially outdoors. AdBlue sprayed directly in diesel exhaust reduces fire ignition risks. In addition, the maximum temperature of HI-eSCR is 500°C, 200°C less than the maximum temperature of a particulate filter.

# F-SERIES WHEEL LOADERS



The layout of the components under the hood is optimised and results in easier maintenance.



Hood opening and battery on/off switches. In case of flat battery, hood can be opened externally with Remote jump start



Grouped drains for clean and quick oil changes



## SAFE AND EASY MAINTENANCE

### Ground level serviceability

- One-piece electric hood

The positioning of the engine at the rear and the easy-to-open electric hood provide fast access to the service points. Jumper cables are available as standard for jump starting the engine if the battery is low.

- Grouped service points

Don't be surprised if you don't see any safety handrails around the hood or steps behind the rear wheels, all service points are easily accessible at ground level. You can do a fast visual check of the hydraulic and transmission oil levels. The three drains are grouped together on the left side, so that fluids are easy and quick to replace.

- Greater safety

All the main service points are easily accessible from the ground, so you can carry out your daily maintenance safely and efficiently.



# MAINTENANCE AND TELEMATICS

## FAST AND EASY

**CASE**®  
CONSTRUCTION

SiteWatch™

### THE SCIENCE BIT

The Case SiteWatch telematics system uses a high-tech control unit mounted on each machine to collate information from that machine and from GPS satellites. This data is then sent wirelessly through the mobile communication networks to the Case Telematics Web Portal.



### SiteWatch: centralised fleet control benefits at your fingertips

#### Measure your true asset availability and optimise it

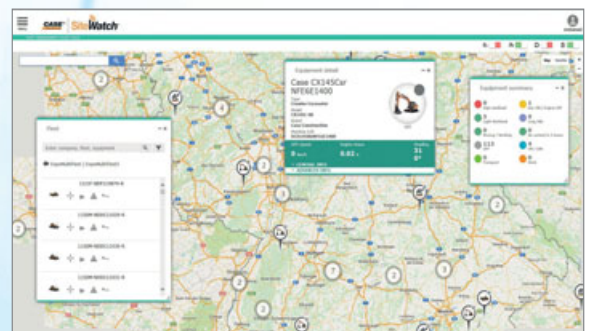
- Eliminate the “phantom fleet”: SiteWatch allows to identify spare units or under loaded machines on each site.
- Become able to reallocate units where they are more needed.
- Forward Maintenance Planning is easier since the actualised working hours are always available.
- Extend the benefits of SiteWatch to the rest of your fleet: SiteWatch can be installed on the units of other brands as well.

#### Challenge your Total Cost of Ownership!

- Being able to compare the fuel usage of different machine types will allow you choose the right equipment.
- Save on transport costs with planned and grouped maintenance tasks.
- Peace of mind, optimised uptime and lower repair costs: with preventive maintenance you can for example be alerted if the engine needs to be serviced and avoid a disruptive breakdown.
- Be able to compare your asset Return On Investment on different sites.
- Your equipment is used only during working hours. You can set up alerts so that you know if it is in use during the weekend or at night.
- Integrate with the programmed maintenance package, so that you can be sure every machine is at the right place at the right time.

#### More Safety, Lower Insurance Premium

- Keep thieves away: dissuade them from attacking your asset because it is geo-localised. SiteWatch is hidden so that thieves can't find it quickly.
- Your fleet is used only where you decide. You can define a virtual fence and receive an email when a machine exits that perimeter.



# F-SERIES

## WHEEL LOADERS

### SPECIFICATIONS

#### ENGINE

FPT engine _____	NEF N67		
Cylinders _____	6		
Displacement (l) _____	6,7		
Air intake _____	Turbocharger with air-to-air cooling.No EGR valve is used: Only fresh air is taken for combustion and no extra cooling system is needed.		
Injection _____	Common Rail Multiple Injection.		
After Treatment System _____	HI-eSCR (DOC + SCR).		
Emission level _____	Compliant with EU Stage IV and US Tier IV Final.		
Max. power (kW) _____	145	172	190
Max. power (hp) _____	195	230	255
(@rpm) _____	2000	1800	1600
SAE J1995/ISO 14396			
Max. torque (N.m) _____	950	1184	1300
(@rpm) _____	1300	1300	1300
SAE J1349			

#### TRANSMISSION

Proshift: 5-speed powershift with lock up  
Lock-up clutch eliminates torque converter losses from second gear up to fifth gear.

Power inch \_\_\_\_\_ Proportional declutching depending on braking intensity.

Forward 1 (km/h) _____	7	6.6	6.4
Forward 2 (km/h) _____	13	11	11
Forward 3 (km/h) _____	19	17	17
Forward 4 (km/h) _____	30	26	26
Forward 5 (km/h) _____	40	40	40
Reverse 1 (km/h) _____	8	7	7
Reverse 2 (km/h) _____	14	12	12
Reverse 3 (km/h) _____	31	28	28

4-Speed powershift  
Intelligent Clutch Cut Off (ICCO)

Forward 1 (km/h) _____	8	7	7
Forward 2 (km/h) _____	13	12	12
Forward 3 (km/h) _____	25	23	23
Forward 4 (km/h) _____	37	37	36
Reverse 1 (km/h) _____	8	7	7
Reverse 2 (km/h) _____	13	13	13
Reverse 3 (km/h) _____	26	25	25

#### AXLES AND DIFFERENTIAL

Rear axle total oscillation _____	24°
A-Choice _____	Heavy duty axles with open differentials and automatic. 100% lock system on the front differential. 100% tractive effort on soft ground, no wheel slip, less tire wear.
B-Choice _____	Standard axles with limited slip differentials front and rear 73% tractive effort on soft ground.

#### TYRES

Tyres _____	20.5R25	23.5R25	23.5R25
-------------	---------	---------	---------

#### BRAKES

Service brake _____	Maintenance free, self-adjusting wet 4-wheel disc brakes.
Brake disc area (m <sup>2</sup> /hub) _____	0.39   0.39   0.47
Parking brake _____	With the negative brake all four wheels are automatically stopped when the engine is stopped.
Disc brake area (cm <sup>2</sup> ) _____	82

#### HYDRAULICS

Valves _____	Rexroth Closed-center, Load sensing hydraulic. Main valve with 3 sections.
Steering _____	The steering orbitrol hydraulically is actuated with priority valve.
Automatic functions _____	Bucket Return-to-dig, Boom Return-to-travel, Boom Auto-lift.
Control type _____	Pilot control with single joystick or two levers.
Type of pump _____	Tandem Variable displacement pump.
(l/min) _____	206   240   282
(@rpm) _____	2000   2000   2000

#### AUXILIARY HYDRAULIC CIRCUIT

Max flow (l/min) _____	260	260	260
Max pressure (bar) _____	224	224	224

#### SERVICE CAPACITIES

Fuel tank (l) _____	246	288	288
AdBlue tank (permanently heated by engine coolant) (l) _____	41.3	41.3	41.3
Cooling system (l) _____	28	30	30
Engine oil (l) _____	13	13	13
Hydraulic oil tank (l) _____	91	91	91
Total hydraulic system oil (l) _____	180	180	200
Front and Rear Axles (l) _____	35 + 35	40 + 40	42 + 40
Transmission oil (l) _____	34	34	34

#### CAB PROTECTION

Protection against falling objects (FOPS) _____	ISO EN3449
Protection against roll over (ROPS) _____	ISO EN13510

#### SOUND AND VIBRATION

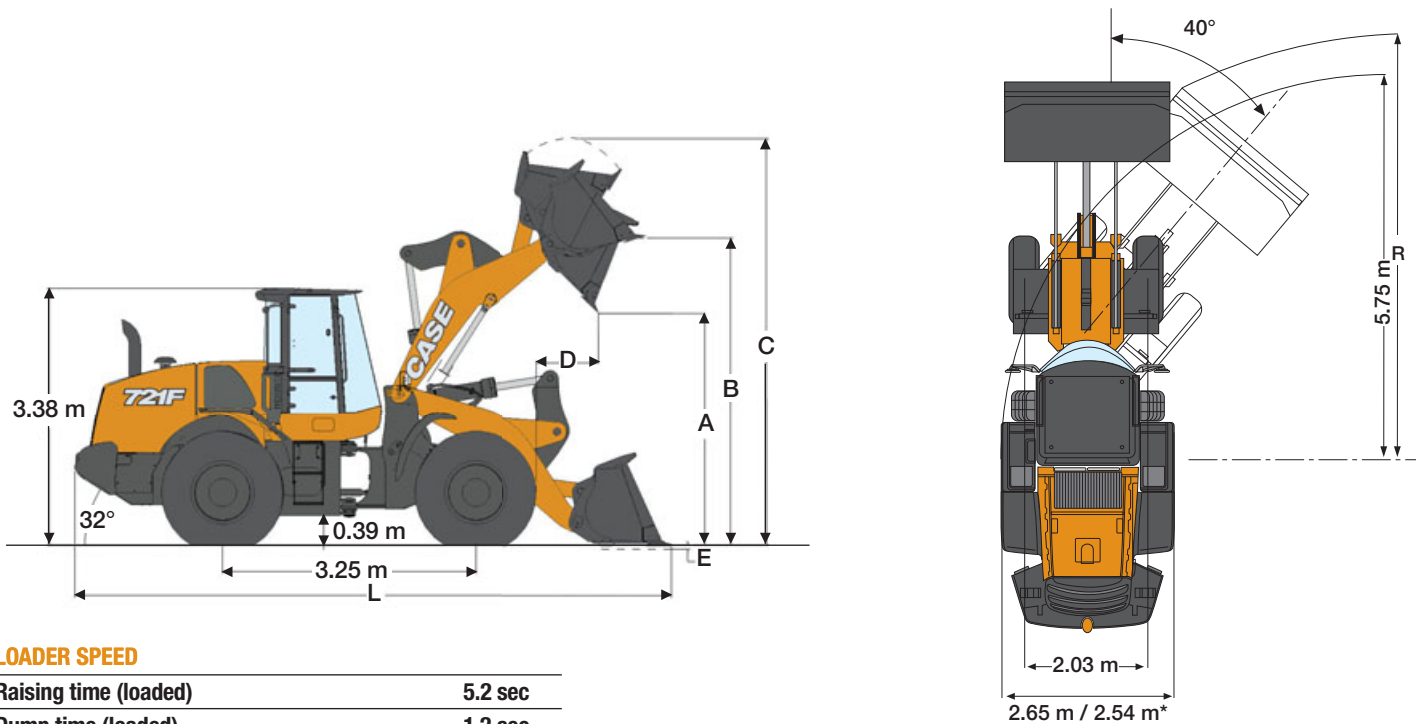
In the cab - LpA (dB) _____ (ISO6395/6396/3744)	
Outside - LwA (dB) _____ (ISO6395/6396/3744)	
Vibrations _____	Operator 's seat meets the criteria of ISO 7096:2000. The vibrations transmitted do not exceed 0.5 m/s <sup>2</sup>

#### ELECTRICAL SYSTEM

24V. Batteries 2 x 12V.	
Alternator (A) _____	65



## 721F GENERAL DIMENSIONS



### LOADER SPEED

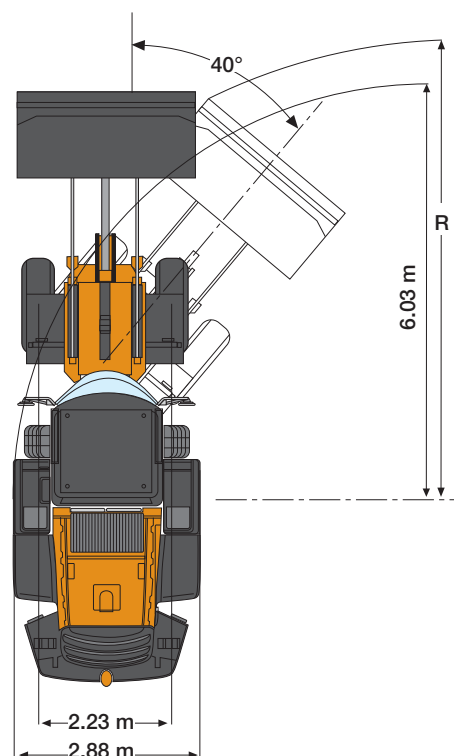
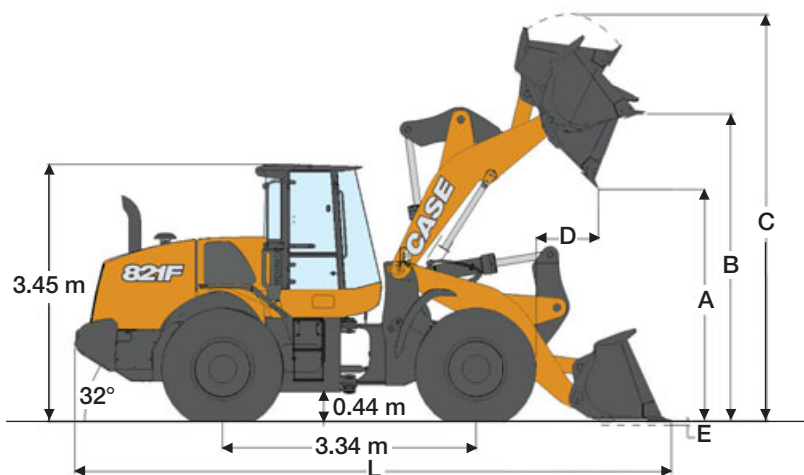
Raising time (loaded)	5.2 sec
Dump time (loaded)	1.2 sec
Lowering time (empty, power down)	2.5 sec
Lowering time (empty, float down)	2.4 sec

\* with narrow tyres

721F		Z-BAR buckets				XR buckets				XT buckets	
		2.7 m <sup>3</sup>		2.4 m <sup>3</sup> w/QC		2.7 m <sup>3</sup> bucket		2.4 m <sup>3</sup> w/QC		2.4 m <sup>3</sup> w/QC	
		edge	teeth	edge	teeth	edge	teeth	edge	teeth	edge	teeth
Volume, heaped (SAE)	m <sup>3</sup>	2.7	2.7	2.4	2.4	2.7	2.7	2.4	2.4	2.4	2.4
Volume at 110% fill factor	m <sup>3</sup>	3.0	3.0	2.6	2.6	3.0	3.0	2.6	2.6	2.6	2.6
Bucket Payload	kg	5440	5369	5299	5325	4533	4464	4385	4409	4924	4946
Maximum material density	tonnes/m <sup>3</sup>	2.0	2.0	2.2	2.2	1.7	1.7	1.8	1.8	2.1	2.1
Bucket outside width	m	2.73	2.73	2.47	2.47	2.73	2.73	2.47	2.47	2.47	2.47
Bucket weight	kg	1237	1344	1656	1619	1237	1344	1656	1619	1627	1590
Tipping load - straight	kg	12435	12292	11356	11405	10419	10280	10129	10177	11280	11326
Tipping load - Articulated at 40°	kg	10881	10738	10599	10649	9066	8927	8770	8818	9847	9893
Breakout force	kg	14236	12885	12185	11284	14160	12817	12040	11151	12016	11193
Lift capacity from ground	kg	13607	13480	13419	13462	11302	11177	11072	11115	13096	13111
A - Dump height at 45° at full height	m	2.93	2.86	2.82	2.74	3.33	3.26	3.21	3.14	2.77	2.69
B - Hinge pin height	m	3.98	3.98	3.98	3.98	4.37	4.37	4.37	4.37	4.16	4.16
C - Overall height	m	5.52	5.52	5.51	5.51	5.91	5.91	5.90	5.90	5.67	5.66
D - Bucket reach at full height	m	1.13	1.21	1.28	1.36	1.13	1.21	1.28	1.36	1.27	1.36
E - Dig depth	cm	7.4	7.4	6.2	6.7	7.6	7.7	6.5	6.9	21	21.3
Overall length without bucket	m	6.53	6.53	6.53	6.53	6.85	6.85	6.85	6.85	6.52	6.52
L - Overall length with bucket on the ground	m	7.65	7.76	7.83	7.95	7.65	7.76	8.18	8.30	8.12	8.24
R - Turning radius to front corner of the bucket	m	6.3	6.4	6.3	6.3	6.5	6.5	6.5	6.5	6.2	6.3
Bucket rollback in carry position	°	43	43	38	38	41	41	36	36	58	58
Dump angle at full height	°	55	55	61	61	55	55	61	61	54	54
Machine operating weight with XHA2 (L3) tyres	kg	14225	14532	14844	14807	14644	14751	15063	15026	14915	14878
Machine operating weight with X-mine D2 (L5) tyres	kg	14924	15231	15543	15506	15343	15450	15762	15725	15614	15577

# F-SERIES WHEEL LOADERS

## 821F GENERAL DIMENSIONS



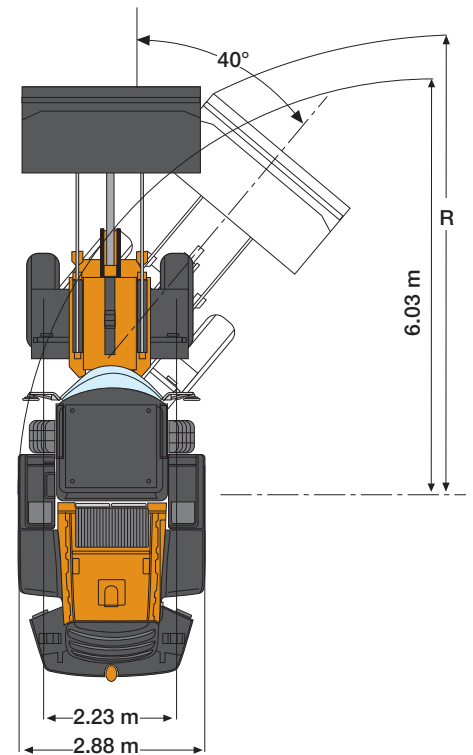
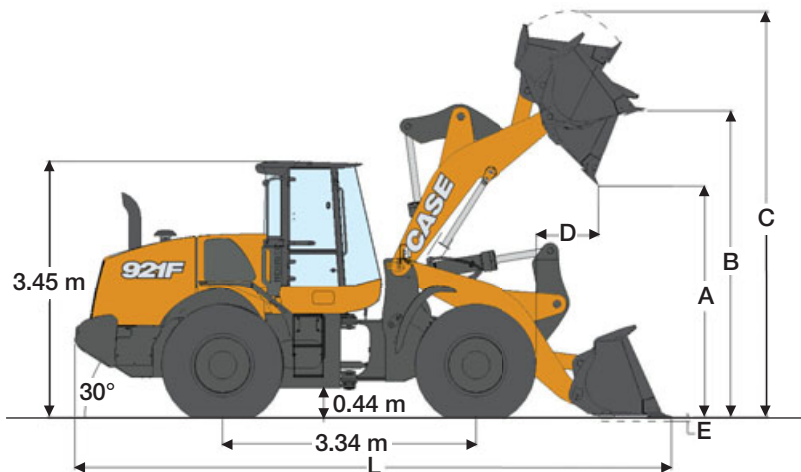
### LOADER SPEED

Raising time (loaded)	6.2 sec
Dump time (loaded)	1.2 sec
Lowering time (empty, power down)	2.9 sec
Lowering time (empty, float down)	2.5 sec

821F		Z-BAR buckets				XR buckets			
		3.4 m <sup>3</sup>		3.2 m <sup>3</sup>		3.2 m <sup>3</sup>		2.8 m <sup>3</sup>	
		edge	teeth	edge	teeth	edge	teeth	edge	teeth
Volume, heaped (SAE)	m <sup>3</sup>	3.4	3.2	3.2	3.1	3.2	3.1	2.8	2.5
Volume at 110% fill factor	m <sup>3</sup>	3.7	3.5	3.5	3.4	3.5	3.4	3.1	2.8
Bucket Payload	kg	6146	6268	6184	6295	4878	4970	4968	5123
Maximum material density	tonnes/m <sup>3</sup>	1.80	1.94	1.93	2.03	1.53	1.60	1.77	2.05
Bucket outside width	m	2.95	2.95	2.94	2.94	2.95	2.94	2.95	2.94
Bucket weight	kg	1550	1460	1520	1430	1520	1430	1366	1276
Tipping load - straight	kg	14203	14465	14284	14523	11366	11562	11547	11889
Tipping load - Articulated at 40°	kg	12293	12536	12367	12590	9756	9941	9936	10246
Breakout force	kg	15076	16133	15473	16676	15721	16953	18032	19496
Lift capacity from ground	kg	17976	18137	18055	18201	13725	13885	13938	14237
A - Dump height at 45° at full height	m	2.94	2.86	2.96	2.88	3.34	3.33	3.50	3.43
B - Hinge pin height	m	4.12	4.12	4.12	4.12	4.56	4.56	4.56	4.56
C - Overall height	m	5.49	5.49	5.45	5.45	5.89	5.89	5.73	5.73
D - Bucket reach at full height	m	1.17	1.13	1.15	1.27	1.26	1.38	1.14	1.26
E - Dig depth	cm	7	5	7	5	14	11	14	11
L - Overall length with bucket on the ground	m	7.94	8.06	7.90	8.03	8.39	8.52	8.23	8.35
Overall length without bucket	m	6.78	6.78	6.78	6.78	7.24	7.24	7.24	7.24
R - Turning radius to front corner of the bucket	m	6.6	6.7	6.6	6.6	6.9	6.9	6.8	6.8
Bucket rollback in carry position	°	44	44	44	44	43	43	43	43
Dump angle at full height	°	55	55	55	55	49	49	49	49
Machine operating weight with XHA2 (L3) tyres	kg	17694	17604	17664	17574	18046	17956	17892	17802
Machine operating weight with X-mine D2 (L5) tyres	kg	18592	18502	18562	18472	18944	18854	18790	18700



## 921F GENERAL DIMENSIONS



### LOADER SPEED

Raising time (loaded)	6.2 sec
Dump time (loaded)	1.4 sec
Lowering time (empty, power down)	3.8 sec
Lowering time (empty, float down)	3.1 sec

921F		Z-BAR buckets		XR buckets	
		4.0 m <sup>3</sup>		4.0 m <sup>3</sup>	
		edge	teeth	edge	teeth
Volume, heaped (SAE)	m <sup>3</sup>	4.0	3.8	4.0	3.8
Volume at 110% fill factor	m <sup>3</sup>	4.4	4.2	4.4	4.2
Bucket Payload	kg	7205	7245	5695	5735
Maximum material density	tonnes/m <sup>3</sup>	1.8	1.9	1.4	1.5
Bucket outside width	m	2.98	2.98	2.98	2.98
Bucket weight	kg	1922	1807	1922	1807
Tipping load - straight	kg	16765	16867	13361	13463
Tipping load - Articulated at 40°	kg	14409	14491	11389	11471
Breakout force	kg	17738	18886	18061	19209
Lift capacity from ground	kg	21587	21735	16739	16887
A - Dump height at 45° at full height	m	2.86	2.86	3.22	3.22
B - Hinge pin height	m	4.12	4.12	4.56	4.56
C - Overall height	m	5.71	5.71	6.15	6.15
D - Bucket reach at full height	m	1.05	1.16	1.19	1.3
E - Dig depth	cm	7	7	14	14
L - Overall length with bucket on the ground	m	7.92	8.07	8.41	8.56
Overall length without bucket	m	6.78	6.78	7.24	7.24
R - Turning radius to front corner of the bucket	m	6.6	6.7	6.6	6.7
Bucket rollback in carry position	°	44	44	43	43
Dump angle at full height	°	50	50	44	44
Machine operating weight with XHA2 (L3) tyres	kg	20068	19953	20210	20095
Machine operating weight with X-mine D2 (L5) tyres	kg	20966	20851	21108	20993

www.casece.com

**EXPERTS FOR THE REAL WORLD**  
**SINCE 1842**

**CASE**  
CONSTRUCTION



Form No. 20090CB - MediaCross Firenze - 02/17

**CNH INDUSTRIAL  
DEUTSCHLAND GMBH**  
Case Baumaschinen  
Benzstr. 1-3 - D-74076 Heilbronn  
DEUTSCHLAND

**CNH INDUSTRIAL FRANCE, S.A.**  
16-18 Rue des Rochettes  
91150 Morigny-Champigny  
FRANCE

**CNH INDUSTRIAL - UK**  
First Floor, Barclay Court 2,  
Heavens Walk,  
Doncaster - DN4 5HZ  
UNITED KINGDOM

**CNH INDUSTRIAL - SOUTH AFRICA**  
Waterfall Business Park  
Bekker Street, Howick Close  
1685 Midrand - Johannesburg  
REPUBLIC OF SOUTH AFRICA

**CNH INDUSTRIAL  
MAQUINARIA SPAIN, S.A.**  
Avda. José Gárate, 11  
28823 Coslada (Madrid)  
ESPAÑA

**CNH INDUSTRIAL ITALIA SPA**  
Strada di Settimo, 323  
10099 San Mauro Torinese (TO)  
ITALIA

**CASE CUSTOMER CENTRE**  
PARIS  
RN 330 - Penchard  
77122 - Monthyon  
FRANCE

**CNH INDUSTRIAL - MIDDLE EAST**  
DAFZA - Dubai Airport Free Zone  
West Wing 4 B, Office 642  
P.O. Box 54588, Dubai,  
UNITED ARAB EMIRATES

**NOTE:** Standard and optional fittings can vary according to the demands and specific regulations of each country. The illustrations may include optional rather than standard fittings - consult your Case dealer. Furthermore, CNH Industrial reserves the right to modify machine specifications without incurring any obligation relating to such changes.

Conforms to directive 2006/42/EC

**CASE**  
**00800-2273-7373**

The call is free from a land line.  
Check in advance with your Mobile Operator if you will be charged. Toll free number not available from all calling areas.