

**F-SERIES WHEEL LOADERS
521F | 621F**

CASE
CONSTRUCTION



**FASTER,
FUEL EFFICIENT**

www.casece.com

**EXPERTS FOR THE REAL WORLD
SINCE 1842**

FASTER, FUEL EFFICIENT

A safe investment for the toughest jobs

For the toughest jobs, reliability comes with a perfect control of the oil temperature in the axles.

- **For soft soil** where higher grip control and higher resistance are needed:
 - **Effective grip control** with the differential lock on the front axle. It can be activated automatically or manually controlled with the left foot.
 - **No overheating** because the differential lock does not slip
 - **Higher resistance** with heavy duty front and rear axles.
- **For a limited investment**, standard axles with limited slip differential are also available and proven to be reliable.
- **For even more reliability**, we have invented the COOLING BOX that keeps constant the cooling fluids temperature.



Less maintenance, lower costs

- Lower costs because **SCR** uses fewer components:
 - No particulate filter
 - No extra fans for additional cooling
 - No specific oil needed
- Longer maintenance intervals:
 - because the engine oil is not contaminated with unfiltered air
- No break down: **SCR** offers the highest fuel compatibility

Premium engine technology: SCR

SCR (Selective Catalytic Reduction) is a well-proven reliable solution. Having been in use in Europe since 2004 on trucks, the AdBlue™ DEF is can easily be found almost anywhere.

- More productivity with 10% fuel savings because SCR allows optimized combustion temperature
- No loss of power and fuel because no extra cooling is needed
- Cost savings, as SCR engines can be used with “red” fuel



MORE COMFORT FOR MORE PRODUCTIVITY



Access fit for a King

Getting in the cab is easy; the wide steps and the handle make you feel safe, while the wide door provides unobstructed access.

Outstanding visibility

You'll feel more confident and work faster with the great all round visibility.

The curved rear hood shape is very low because the **SCR technology** doesn't require additional fans for cooling.

All controls at your fingertips

Greater focus on the job and less stress with fewer arm moves thanks to the ergonomic positioning of the control panel under your right hand.

Feel confident with ROPS

All our wheel loaders' cab are reinforced and guarantee the operator protection against roll over (**ROPS certified**).

Great storage space

The overhead radio placement and the storage make the Case cab even more convenient for you.







TELEMATICS

ANTICIPATION AND CONTROL

CASE[®]
CONSTRUCTION

SiteWatch[™]

THE SCIENCE BIT

The Case SiteWatch telematics system uses a high-tech control unit mounted on each machine to collate information from that machine and from GPS satellites. This data is then sent wirelessly through the mobile communication networks to the Case Telematics Web Portal.



SiteWatch: centralised fleet control benefits at your fingertips

Measure your true asset availability and optimise it

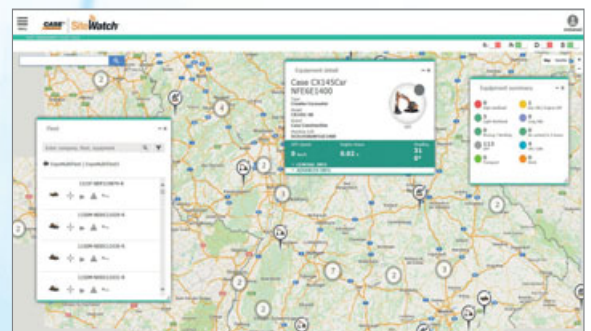
- Eliminate the “phantom fleet”: SiteWatch allows to identify spare units or under loaded machines on each site.
- Become able to reallocate units where they are more needed.
- Forward Maintenance Planning is easier since the actualised working hours are always available.
- Extend the benefits of SiteWatch to the rest of your fleet: SiteWatch can be installed on the units of other brands as well.

Challenge your Total Cost of Ownership!

- Being able to compare the fuel usage of different machine types will allow you choose the right equipment.
- Save on transport costs with planned and grouped maintenance tasks.
- Peace of mind, optimised uptime and lower repair costs: with preventive maintenance you can for example be alerted if the engine needs to be serviced and avoid a disruptive breakdown.
- Be able to compare your asset Return On Investment on different sites.
- Your equipment is used only during working hours. You can set up alerts so that you know if it is in use during the weekend or at night.
- Integrate with the programmed maintenance package, so that you can be sure every machine is at the right place at the right time.

More Safety, Lower Insurance Premium

- Keep thieves away: dissuade them from attacking your asset because it is geo-localised. SiteWatch is hidden so that thieves can't find it quickly.
- Your fleet is used only where you decide. You can define a virtual fence and receive an email when a machine exits that perimeter.



SPECIFICATIONS

ENGINE

	521F	621F
FPT engine _____	N45	N67
Cylinders _____	4	6
Displacement (l) _____	4.5	6.7
Air intake _____	Turbocharger with air-to air cooling.	
Injection _____	Common Rail Multiple Injection.	
Emission level _____	Tier 4i	Tier 4i
Max. power (kW) _____	106	128
Max. power (hp) _____	142	172
(@ rpm) _____	1800	1800
SAE J1995		
Max. torque (Nm) _____	608	730
(@ rpm) _____	1600	1600
SAE J1349		
Nox emission (g/kWh) _____	2.88	3.01
HC emission (g/kWh) _____	0.08	0.03
CO emission (g/kWh) _____	2.64	0.42
PM emission (g/kWh) _____	0.013	0.009

TRANSMISSION

4-Speed powershift by ZF with Intelligent Clutch Cut Off (ICCO)

	521F	621F
Forward 1 (km/h) _____	6	7
Forward 2 (km/h) _____	11	13
Forward 3 (km/h) _____	22	24
Forward 4 (km/h) _____	36	39
Reverse 1 (km/h) _____	6.4	7
Reverse 2 (km/h) _____	12	14
Reverse 3 (km/h) _____	23	25

AXLES AND DIFFERENTIAL

Rear axle total oscillation _____	24°
A-Choice by ZF _____	Heavy duty axles with open differentials and automatic. 100% lock system on the front differential. 100% tractive effort always, no wheel slip, less tire wear.
B-Choice by ZF _____	Standard axles with limited slip differentials front and rear 73% tractive effort on slippery ground.

TYRES

Tyres _____	17.5R25	20.5R25
-------------	---------	---------

BRAKES

Service brake _____	Maintenance free, self-adjusting wet 4-wheel disc brakes.	
Brake disc area (m ² /hub) _____	0.31	0.39
Parking brake _____	With the negative brake all four wheels are automatically stopped when the engine is stopped.	
Disc brake area (cm ²) _____	58	

HYDRAULICS

	521F	621F
Valves _____	Rexroth Closed-center, Load sensing hydraulic. Main valve with 3 sections.	
Steering _____	The steering orbitrol hydraulically is actuated with priority valve.	
Automatic functions _____	Bucket Return-to-dig, Boom Return-to-travel, Boom Auto-lift.	
Control type _____	Pilot control with single joystick or two levers.	
Type of pump _____	Tandem Variable displacement pump.	
(l/min) _____	134	171
(@rpm) _____	2000	2000

AUXILIARY HYDRAULIC CIRCUIT

Max flow (l/min) _____	162
Max pressure (bar) _____	227

SERVICE CAPACITIES

Fuel tank (l) _____	189	248
AdBlue tank (l) _____	41.3	41.3
Cooling system (l) _____	22	26.8
Engine oil (l) _____	12	13
Hydraulic oil tank (l) _____	57	91
Total hydraulic system oil (l) _____	114	148
Front and Rear Axles (l) _____	22+22	22+22
Transmission oil (l) _____	19	27

CAB PROTECTION

Protection against falling objects (FOPS) _____	ISO EN3449
Protection against roll over (ROPS) _____	ISO EN13510

SOUND AND VIBRATION

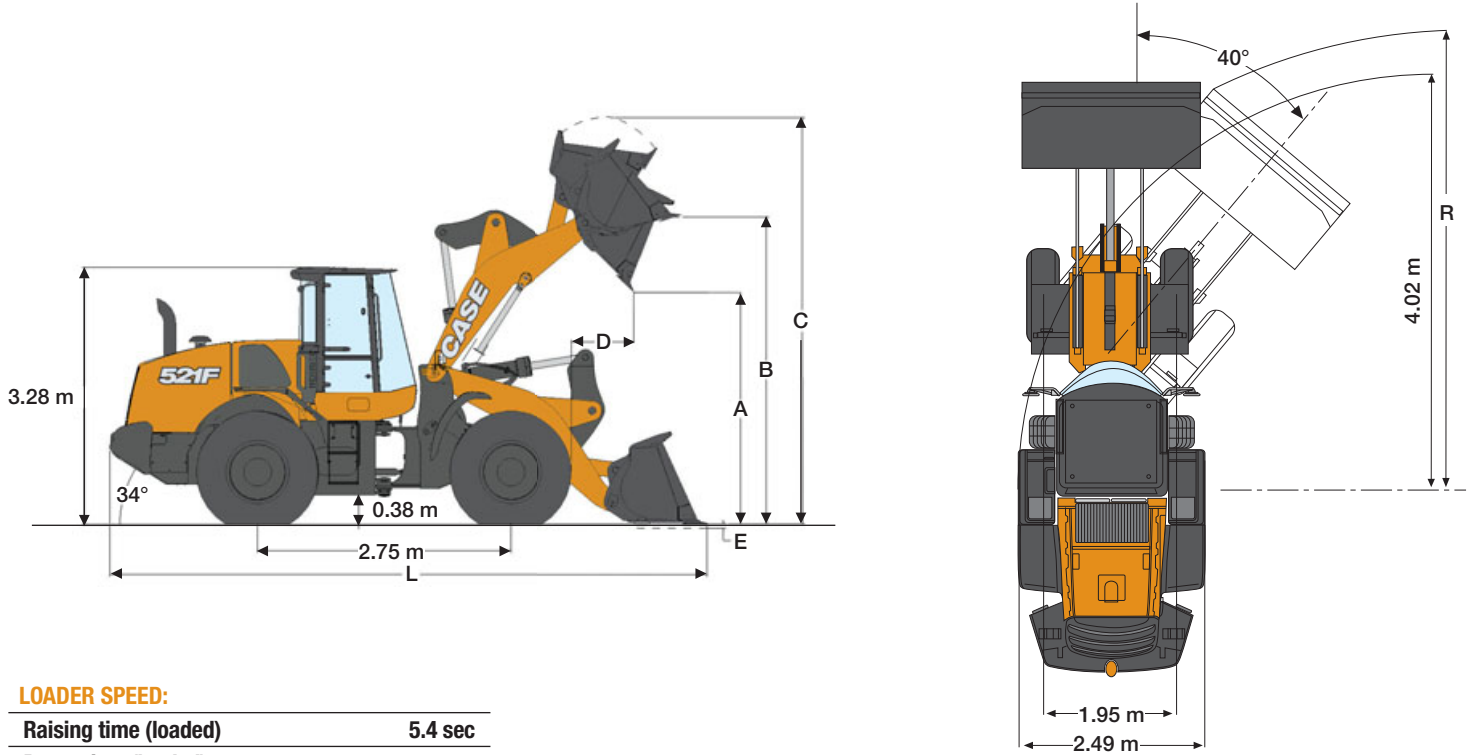
In the cab - LpA (dB) _____ (ISO 6595/6396/3744)	70	
Outside - LwA (dB) _____ (SAE J88 SEP80)	102	104
Vibrations _____	Operator 's seat meets the criteria of ISO 7096:2000. The vibrations transmitted do not exceed 0.5 m/s ²	

ELECTRICAL SYSTEM

24V. Batteries 2 x 12V.	
Alternator (A) _____	65

F-SERIES WHEEL LOADERS

521F GENERAL DIMENSIONS

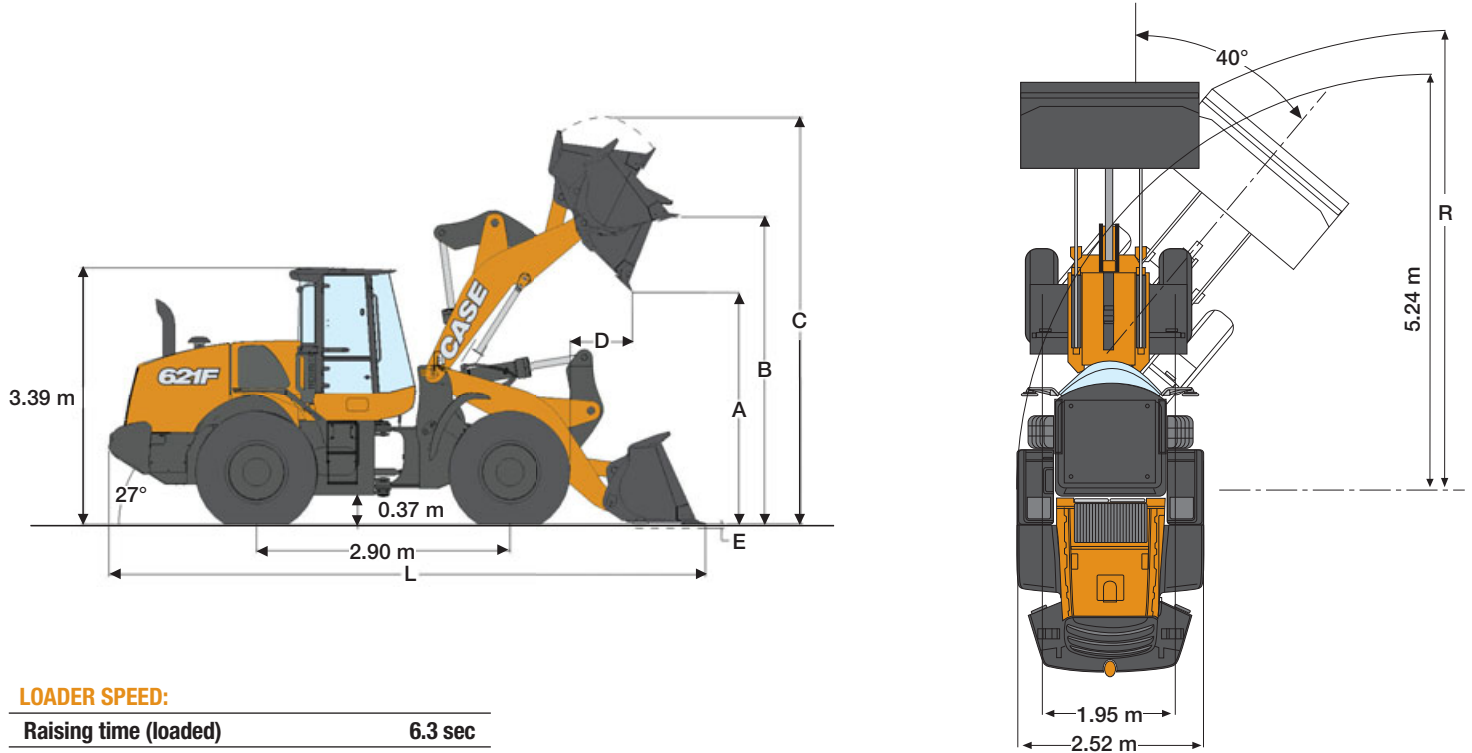


LOADER SPEED:

Raising time (loaded)	5.4 sec
Dump time (loaded)	1.2 sec
Lowering time (empty, power down)	3.9 sec
Lowering time (empty, float down)	3.9 sec

521F	Z-bar bucket				XR bucket				XT bucket		
	2.1 m ³		1.7 m ³ w/QC		1.9 m ³		1.7 m ³ w/QC		1.7 m ³ w/QC		
	edge	teeth + segment	edge	teeth	edge	teeth	edge	teeth	edge	teeth	
Volume, heaped (SAE)	m ³	2.1	2.1	1.7	1.7	1.9	1.8	1.7	1.7	1.7	1.7
Volume at 110% fill factor	m ³	2.3	2.3	1.9	1.9	2.1	2.0	1.9	1.9	1.9	1.9
Bucket Payload	kg	3478	3475	3535	3584	2977	2975	2947	2994	3249	3296
Maximum material density	ton/m ³	1.7	1.7	2.1	2.1	1.6	1.6	1.7	1.8	1.9	1.9
Bucket outside width	m	2.49	2.54	2.44	2.44	2.49	2.54	2.44	2.44	2.44	2.44
Bucket weight	kg	857	877	1137	1065	821	842	1137	1065	1117	1045
Tipping load - straight	kg	8150	8145	8317	8415	7011	7010	6985	7080	7634	7728
Tipping load - Articulated at 40°	kg	6957	6949	7069	7167	5955	5950	5894	5989	6497	6591
Breakout force	kg	7591	7781	7104	6959	8094	8366	7077	6933	8288	8124
Lift capacity from ground	kg	8889	8979	10620	10700	8830	8827	8689	8773	10236	10365
A - Dump height at 45° at full height	m	2.62	2.55	2.58	2.56	3.04	2.97	2.96	2.94	2.5	2.49
B - Hinge pin height	m	3.61	3.61	3.61	3.61	3.99	3.99	3.99	3.99	3.75	3.75
C - Overall height	m	4.75	4.75	4.77	4.77	5.06	5.06	5.14	5.14	4.94	4.94
D - Bucket reach at full height	m	1.12	1.19	1.18	1.22	1.05	1.12	1.16	1.19	1.23	1.27
E - Dig depth	cm	8	8	7	5	11	11	10	9	19	18
L - Overall length with bucket on the ground	m	6.83	6.94	6.90	6.92	7.11	7.21	7.24	7.27	7.05	7.07
R - Turning radius to front corner of the bucket	m	5.5	5.6	5.5	5.5	5.7	5.7	5.6	5.7	5.5	5.6
Bucket rollback in carry position	°	43	43	48	48	44	44	50	50	52	52
Dump angle at full height	°	55	55	50	50	51	51	46	46	62	62
Machine operating weight with XHA2 (L3) tyres	kg	10448	10468	10728	10656	10582	10602	10897	10825	11189	11117
Machine operating weight with VSDL (L5) tyres	kg	11088	11108	11368	11296	11222	11242	11537	11465	11829	11757

621F GENERAL DIMENSIONS



LOADER SPEED:

Raising time (loaded)	6.3 sec
Dump time (loaded)	1.2 sec
Lowering time (empty, power down)	4.4 sec
Lowering time (empty, float down)	4.4 sec

621F		Z-bar bucket				XR bucket				XT bucket	
		2.4 m ³		2.0 m ³ w/QC		2.2 m ³		2.0 m ³ w/QC		2.0 m ³ w/QC	
		edge	teeth	edge	teeth	edge	teeth	edge	teeth	edge	teeth
Volume, heaped (SAE)	m ³	2.4	2.4	2.0	2.0	2.2	2.1	2.0	2.0	2.0	2.0
Volume at 110% fill factor	m ³	2.6	2.6	2.2	2.2	2.4	2.3	2.2	2.2	2.2	2.2
Bucket Payload	kg	4371	4367	4519	4570	3707	3704	3708	3757	4092	4157
Maximum material density	ton/m ³	1.84	1.85	2.26	2.29	1.70	1.73	1.85	1.88	2.05	2.08
Bucket outside width	m	2.49	2.54	2.49	2.49	2.49	2.54	2.49	2.49	2.49	2.49
Bucket weight	kg	941	968	1242	1168	890	916	1242	1168	1242	1168
Tipping load - straight	kg	9964	9962	10325	10426	8488	8485	8527	8624	9360	9489
Tipping load - Articulated at 40°	kg	8741	8735	9038	9139	7414	7407	7416	7514	8185	8314
Breakout force	kg	9819	10097	9472	9272	11233	11591	9503	9310	10595	10395
Lift capacity from ground	kg	9857	9956	13068	13175	11411	11410	11348	11436	14642	14851
A - Dump height at 45° at full height	m	2.75	2.68	2.71	2.69	3.24	3.17	3.19	3.18	2.65	2.63
B - Hinge pin height	m	3.83	3.83	3.83	3.83	4.24	4.24	4.24	4.24	3.96	3.96
C - Overall height	m	5.04	5.04	5.05	5.05	5.45	5.45	5.46	5.46	5.23	5.23
D - Bucket reach at full height	m	1.08	1.16	1.12	1.16	1.01	1.01	1.22	1.25	1.23	1.26
E - Dig depth	cm	9	9	9	8	9	9	10	9	18	17
L - Overall length with bucket on the ground	m	7.47	7.57	7.53	7.56	7.75	7.86	7.93	7.97	7.78	7.81
Overall length without bucket	m	6.28	6.28	6.28	6.28	6.69	6.69	6.69	6.69	6.20	6.20
R - Turning radius to front corner of the bucket	m	5.7	5.8	5.7	5.7	5.9	6.0	5.9	5.9	5.8	5.8
Bucket rollback in carry position	°	44	44	49	49	46	46	51	51	58	58
Dump angle at full height	°	51	51	46	46	46	46	41	41	55	55
Machine operating weight with XHA2 (L3) tyres	kg	12191	12218	12492	12418	12336	12362	12688	12614	12569	12459
Machine operating weight with X-mine D2 (L5) tyres	kg	12890	12917	13191	13117	13035	13061	13387	13313	13268	13158

www.casece.com
EXPERTS FOR THE REAL WORLD
SINCE 1842

CASE
CONSTRUCTION



Form No. 20016GB - MediaCross Firenze - 02/17

**CNH INDUSTRIAL
DEUTSCHLAND GMBH**
Case Baumaschinen
Benzstr. 1-3 - D-74076 Heilbronn
DEUTSCHLAND

CNH INDUSTRIAL FRANCE, S.A.
16-18 Rue des Rochettes
91150 Morigny-Champigny
FRANCE

CNH INDUSTRIAL - UK
First Floor, Barclay Court 2,
Heavens Walk,
Doncaster - DN4 5HZ
UNITED KINGDOM

CNH INDUSTRIAL - SOUTH AFRICA
Waterfall Business Park
Bekker Street, Howick Close
1685 Midrand - Johannesburg
REPUBLIC OF SOUTH AFRICA

**CNH INDUSTRIAL
MAQUINARIA SPAIN, S.A.**
Avda. José Gárate, 11
28823 Coslada (Madrid)
ESPAÑA

CNH INDUSTRIAL ITALIA SPA
Strada di Settimo, 323
10099 San Mauro Torinese (TO)
ITALIA

**CASE CUSTOMER CENTRE
PARIS**
RN 330 - Penchard
77122 - Monthyon
FRANCE

CNH INDUSTRIAL - MIDDLE EAST
DAFZA - Dubai Airport Free Zone
West Wing 4 B, Office 642
P.O. Box 54588, Dubai,
UNITED ARAB EMIRATES

NOTE: Standard and optional fittings can vary according to the demands and specific regulations of each country. The illustrations may include optional rather than standard fittings - consult your Case dealer. Furthermore, CNH Industrial reserves the right to modify machine specifications without incurring any obligation relating to such changes.

Conforms to directive 2006/42/EC

CASE
00800-2273-7373

The call is free from a land line.
Check in advance with your Mobile Operator if you will be charged. Toll free number not available from all calling areas.

