



ARTICULATED LOADERS



106 ▲ 206 ▲ 306 ▲ 406 ▲ 506



IN THE BEGINNING

What began in the 19th century as an agricultural implement manufacturer has grown into a 21st century compact equipment powerhouse – Mustang Compact Equipment.

Known in the early years as the Owatonna Manufacturing Company, Mustang was among the first to make what is known today as the skid steer loader. Since that time, Mustang has combined old-school experience with innovative processes to offer one of the broadest lines of compact equipment available today.

MUSTANG. THE ORIGINAL WORKHORSE.



FLEXIBLE WORKHORSES



From the farm to the jobsite and everywhere in between, the Articulated Loaders from Mustang provide the flexibility necessary to conquer a wide variety of tasks. Versatile and compact, the articulated loaders maneuver freely, even in tight places. Due to their 45 degree articulated steering design, these machines inflict minimal ground damage, even to sensitive surfaces.

Built with the same level of quality and workmanship found on the Mustang skid steer loaders, the Articulated Loaders provide superior maneuverability, high load capacities, and extreme flexibility.

SUPERIOR MANEUVERABILITY ▲ Articulated steering angles of 45 degrees offer access to narrow places other machines can't gain access. A consistent turning radius means that where the front goes, the rear follows.

FULL CAPACITY ▲ Articulated Loaders from Mustang may be compact in size, but not in strength. Rated operating capacities up to 1161 kg on the 506 bring major power to jobs in tight confines and on sensitive surfaces.

EXTREME FLEXIBILITY ▲ Universal-type attachment bracket fits most skid steer loader attachments, expanding the work tool selection that can be utilized.



106 ▲ 206 ▲ 306 ▲ 406 ▲ 506

TURNING

INACCESSIBLE INTO EASY ACCESS



▶ 106

▶ 206

▶ 306

▶ 406

▶ 506

Intelligent design and advanced engineering provide increased performance and handy, time-saving features.

PRECISE MOVEMENT ▲ An inching pedal allows an operator to vary the ground speed while maintaining a fixed engine speed. This allows for precise control of attachment performance.

MAINTAIN TRACTION ▲ A hydraulically-actuated differential lock on the axles of the 306, 406 and 506 transfer power to a slipping wheel to one hundred percent traction drive. The 106 and 206 offer a limited slip differential.

POWERFUL HYDRAULICS ▲ Work hydraulics up to 56.8 L/min power a wide variety of attachments, increasing flexibility and productivity.



CYCLE THROUGH ▲ your daily tasks with fast cycle times. Quick load, lift, dump and return actions allow you to get more done in less time. A two-speed option on the 306, 406, and 506 increases productivity even more with travel speeds up to 20 km/hr.



MULTI-FUNCTION JOYSTICK ▲ controls lift arm, bucket, and auxiliary hydraulic functions, as well as the float function. Travel direction, differential lock functions and two-speed are activated by switches and push buttons on the joystick.



SERVICE ACCESS ▲ is made easy with a large engine hood that provides access to the engine, coolant and hydraulic oil. A tiltable, gas-spring assisted, iso-mounted operator platform lifts for easy maintenance access to the hydraulics and battery.

DEMAND SMART DESIGN



STAY GROUNDED ▲ with an oscillating chassis, 10 degrees in either direction, that maintains machine traction. Even on uneven terrain, the oscillation keeps the tires in contact with the ground.



POWERFUL, INDUSTRY-PROVEN ▲ Yanmar diesel engines meet engine emissions standards and provide excellent performance in a wide variety of applications and climates.



AN INTELLIGENT DESIGN ▲ ensures that the hydraulic hose lines and loader linkage cleverly recess into the lift arm when raised to full height, protecting the hydraulic lines when lifting or dumping.

106 ▲ 206 ▲ 306 ▲ 406 ▲ 506

CLIMB INTO THE SADDLE



INSTRUMENT PANEL ▲

Electronic instrument panel is centered on the steering column for easy monitoring.



CLIMATE CONTROL ▲

A heating system comes standard on cab models. On the model 506, air-conditioning is available.



ROAD LIGHTS ▲ The optional road light system provides added safety when travelling from one site to another.



EXCELLENT VISIBILITY ▲

Spacious surface window area on the cab models allow for excellent, 360 degree visibility.

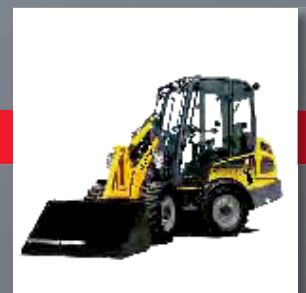


VENTILATION ▲ Cab doors have an extended latch design, allowing them to be left partially open for ventilation.

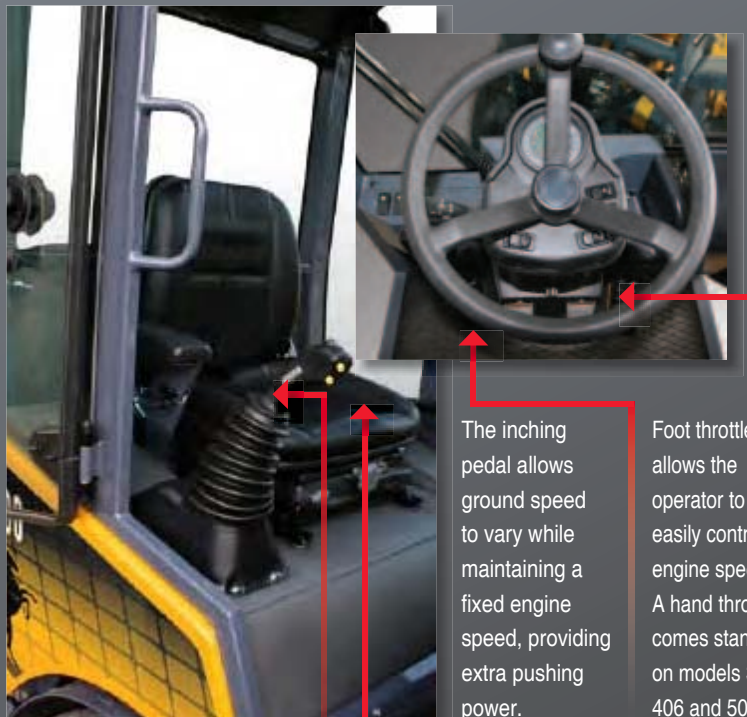
Operator comfort is the key to obtaining maximum productivity. That's why Mustang provides a variety of options that customizes the cab to YOUR needs.



FOUR-POST



CAB



Multi-function joystick controls lift arm, bucket and float functions, as well as travel direction and auxiliary hydraulics. On models 306, 406 and 506, it controls two-speed and differential lock.

The inching pedal allows ground speed to vary while maintaining a fixed engine speed, providing extra pushing power.

Foot throttle allows the operator to easily control engine speed. A hand throttle comes standard on models 306, 406 and 506.

Standard suspension seat provides the operator with a comfortable ride, even on rough terrain.



TIME IS MONEY GET ATTACHED

Time is precious on the jobsite. Mustang realizes this and has made it simple and fast to hook up a wide variety of available attachments.

All Articulated Loaders feature the easy-to-use Multi-Tach[®] quick-attach attachment mounting system. It is a universal-type system that is fast and easy to use and compatible with most attachments, increasing versatility.

A hydraulic-powered Power-A-Tach[®] quick-attach mounting system adds the convenience of mounting and dismounting attachments from the operator's seat.

Flat-faced auxiliary couplers allow drip-free connections from attachment hoses.



With a wide variety of MUSTANG[®] attachments available from your dealer, the Articulated Loaders are easily transformed to meet the needs of your business.

	106 4-POST	206 4-POST	306 4-POST	306 CAB	406 4-POST	506 4-POST	506 CAB
STRUCTURE							
Four-Post Canopy	○	○	○		○	○	
Cab				●			●
PERFORMANCE							
All-Tach [®] Attachment Mounting System	○	○	○	○	○	○	○
4-point Attachment Mounting System	●	●	●	●	●	●	●
Power-A-Tach [®] Attachment Mounting System	●	●	●	●	●	●	●
Counterweight			●	●	●	○	○
Hydrostatic Drive System, One-Speed	○	○					
Hydrostatic Drive System, Two-Speed			○	○	○	○	○
Inching Pedal	○	○	○	○	○	○	○
Parallel Loader Linkage, Two-way w/ Self-leveling	○	○	○	○	○		
Z-bar Loader Linkage w/ Limited Self-leveling						○	○
ENGINE							
Start-Assist Glow Plugs	○	○	○	○	○	○	○
ELECTRICAL SYSTEM							
12-volt Battery	○	○	○	○	○	○	○
Instrument Panel – Basic	○	○					
Instrument Panel – Deluxe	●	●	○	○	○	○	○
Remote Battery Disconnect	○	○	○	○	○	○	○
OPERATOR STATION							
Adjustable 2-inch Seat Belt	○	○	○	○	○	○	○
Horn	○	○	○	○	○	○	○
Air-Conditioning / Heater							●
Back-Up Alarm	●	●	●	●	●	●	●
Dual-Element Air Cleaner with Indicator	○	○	○	○	○	○	○
Suspension Seat – Adjustable	○	○	○	○	○	○	○
Multi-Function Joystick Control	○	○	○	○	○	○	○
Operator Presence Seat Switch	○	○	○	○	○	○	○
Sound Reduction Package	○	○	○	○	○	○	○
Tilttable, Deluxe Steering Column	●	●	○	○	○	○	○
SERVICE							
Tilttable Operator's Platform	○	○	○	○	○	○	○
Lockable Engine Cover / Fuel Cap	○	○	○	○	○	○	○
WORK LIGHTS							
Road Lights	●	●	●	○	●	●	○

○ STANDARD ● OPTIONAL

106 ▲ 206 ▲ 306 ▲ 406 ▲ 506

OWNER DRIVEN

Mustang authorized dealers offer a full line of compact equipment, backed up by exceptional sales, service and parts experience.

Mustang reminds users to read and understand the operator's manual before operating any equipment. Also, make sure all safety devices and shields are in place and functioning properly.

For more information on the Articulated Loaders and the rest of the Mustang equipment line, visit our website at

eu.mustangmfg.com

Your nearest MUSTANG dealer:

SPECIFICATIONS	106 – 4-Post	206 – 4-Post	306 – 4-Post	306 – Cab	406 – 4-Post	506 – 4-Post	506 – Cab
DIMENSIONS	A. Length with Bucket on Ground	3364 mm	4040 mm	3975 mm	3975 mm	4224 mm	4490 mm
	B. Shipping Length	2752 mm	3365 mm	3365 mm	3365 mm	3550 mm	3815 mm
	C. Front Wheel Center to Pivot Pin	490 mm	518 mm	515 mm	515 mm	570 mm	740 mm
	D. Wheelbase	1362 mm	1640 mm	1640 mm	1640 mm	1617 mm	1720 mm
	E. Rear Overhang	747 mm	1051 mm	1051 mm	1051 mm	1202 mm	1200 mm
	F. Height to Top of Cab	2210 mm	2212 mm	2255 mm	2255 mm	2310 mm	2451 mm
	H. Hood Height	1345 mm	1412 mm	1450 mm	1450 mm	1513 mm	1487 mm
	J. Maximum Reach Height	3180 mm	3255 mm	3310 mm	3310 mm	3550 mm	3603 mm
	K. Bucket Hinge Pin Height	2710 mm	2790 mm	2845 mm	2845 mm	3002 mm	3053 mm
	L. Ground Plane to Bucket Edge Height	2480 mm	2565 mm	2620 mm	2620 mm	2770 mm	2823 mm
	M. Dump Clearance at Full Height	1940 mm	2045 mm	2095 mm	2095 mm	2215 mm	2215 mm
	N. Dump Reach at Full Height	162 mm	162 mm	135 mm	135 mm	105 mm	267 mm
	P. Width over Tires	930 mm	1058 mm	1065 mm	1065 mm	1195 mm	1400 mm
	R. ROPS Width	813 mm	1025 mm	1025 mm	1025 mm	1025 mm	1025 mm
	S. Ground Clearance	194 mm	205 mm	235 mm	235 mm	260 mm	246 mm
	T. Turning Radius with Bucket	2030 mm	2530 mm	2870 mm	2870 mm	3123 mm	3255 mm
	U. Outer Turning Radius	1505 mm	2120 mm	2525 mm	2525 mm	2643 mm	2795 mm
	V. Inner Turning Radius	605 mm	1030 mm	1440 mm	1440 mm	1427 mm	1395 mm
	W. Articulation Angle from Center	45°	45°	45°	45°	45°	45°
	X. Rollback at Height	30°	29°	29°	29°	35°	35°
	Y. Maximum Dump Angle at Full Height	56°	53°	53°	53°	53°	58°
Z. Bucket Rollback at Ground	27°	25°	25°	25°	29°	29°	
AA. Attachment Pivot Clearance	202 mm	157 mm	208 mm	208 mm	253 mm	203 mm	
BB. Wheel Radius	324 mm	340 mm	370 mm	370 mm	397 mm	385 mm	
CC. Bucket Width - standard	920 mm	1050 mm	1150 mm	1150 mm	1500 mm	1500 mm	
ENGINE	Engine Manufacturer	Yanmar	Yanmar	Yanmar	Yanmar	Yanmar	Yanmar
	Model / Number of Cylinders	3TNV76* / 3	3TNV88* / 3	3TNV88* / 3	3TNV88* / 3	4TNV88* / 4	4TNV88* / 4
	Displacement	1.3 l	1.3 l	1.3 l	1.3 l	1.6 l	1.6 l
LOAD CAPACITIES	Net Power (kw) @ 2800 rpm	23 hp (17.4)	35 hp (26)	35 hp (26)	35 hp (26)	47 hp (35)	47 hp (35)
	Rated Operating Capacity with Bucket ¹	435 kg	714 kg	854 kg	905 kg	901 kg	1144 kg
	Static Tipping Load with Bucket						
HYDRAULICS	Straight	858 kg	1428 kg	1710 kg	1811 kg	1802 kg	1993 kg
	Full Turn	438 kg	816 kg	1116 kg	1198 kg	1181 kg	1357 kg
	Static Tipping Load with Pallet Forks						
	Straight	660 kg	1099 kg	1328 kg	1436 kg	1332 kg	1531 kg
	Full Turn	334 kg	645 kg	861 kg	952 kg	874 kg	1041 kg
OTHER	Bucket Breakout	10.8 kN	23.45 kN	25.4 kN	25.4 kN	24.12 kN	47.81 kN
	Operating Weight	1721 kg	2169 kg	2502 kg	2631 kg	2790 kg	3106 kg
	Work Hydraulic System Flow	30 L/min	45 L/min	45 L/min	45 L/min	56.8 L/min	56.8 L/min
SOUND	Work Hydraulic System Pressure	207 bar	207 bar	207 bar	207 bar	207 bar	207 bar
	Drive Hydraulic System Pressure	320 bar	320 bar	345 bar	345 bar	410 bar	410 bar
	Drive Hydraulic Reservoir Capacity	34 L	26 L	26 L	26 L	41.6 L	42 L
	Battery	12-volts	12-volts	12-volts	12-volts	12-volts	12-volts
VIBRATION	Fuel Tank Capacity	26 L	56.8 L	57 L	57 L	68 L	68 L
	Travel Speed	0-10.5 km/hr	0-13.0 km/hr	0-18.5 km/hr	0-18.5 km/hr	0-20 km/hr	0-20 km/hr
	Tire Size	8.50 x 15	10.50 x 15	10.00 x 16.5	10.00 x 16.5	12.00 x 16.5	31 x 15.5-16.5
VIBRATION	Sound Power	<101 dB(A)	<101 dB(A)	<101 dB(A)	<101 dB(A)	<101 dB(A)	<101 dB(A)
	Sound Pressure	<87 dB(A)	<87 dB(A)	<87 dB(A)	<87 dB(A)	<87 dB(A)	<87 dB(A)
	Hand-Arm	0.04 i .p0	0.2 i .p0	0.2 i .p0	1.15 i .p0	0.5 i .p0	0.5 i .p0
	Hand-Arm Action Value	1/2 i .p0	1/2 i .p0	1/2 i .p0	2.5 i .p0	1/2 i .p0	1/2 i .p0
	Whole Body	-15/ i .p0	-156 i .p0	-156 i .p0	0.89 i .p0	-14. i .p0	-14. i .p0
Whole Body Action Value	-12 i .p0	-12 i .p0	-12 i .p0	0.5 i .p0	-12 i .p0	-12 i .p0	

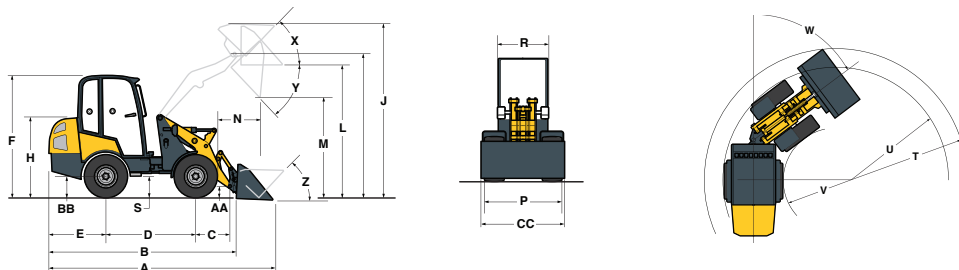
N5150004EN_A_0512

* - Stage 3A Engine

1 - Capacities per ISO 14397 standards

Mustang reserves the right to make changes in specifications at any time without notice or obligation.

REFERENCE DIAGRAMS



MUSTANG

Head Office: Manitou Group
B.P. 249 - 430 rue de L'Aubinière
44158 Ancenis Cedex - France
Tel : 00 33 (0)2 40 09 10 11
Fax: 00 33 (0)2 40 83 36 88